

WHOLE - HOUSE SMART HOME SYSTEM

Make Your Home a Decade Ahead



Shenzhen ORVIBO Technology Co.,Ltd.

Address: 7F, Block A7, Nanshan Zhiyuan Park, No.1001 Xueyuan ,
Road, Nanshan District, Shenzhen, 518055, China

Web: <https://global.orvibo.com/>

Email: sales@orvibo.com



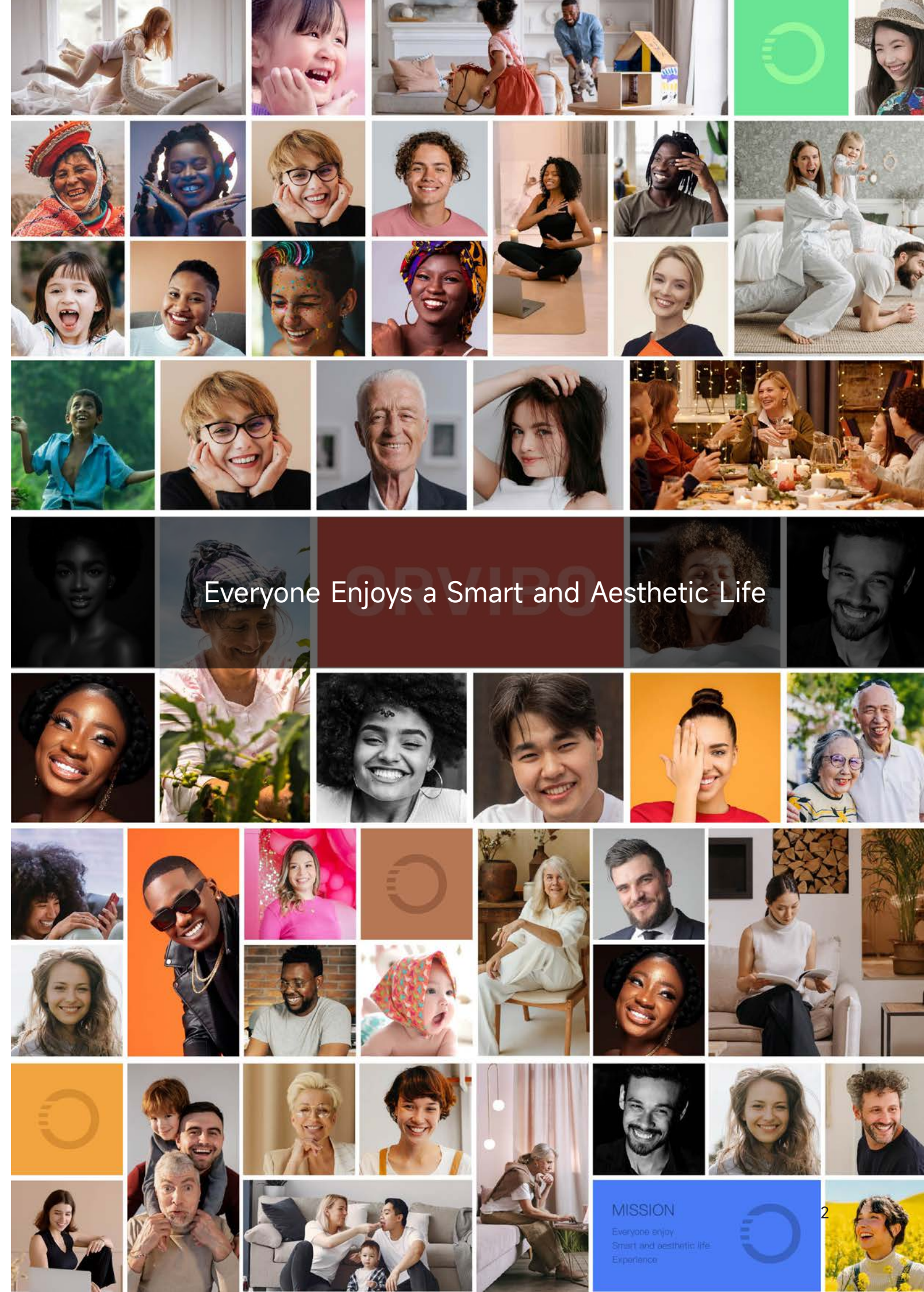
Contents

Introduction

Brand Introduction	5
Product Strength	6
Cross-platform compatibility	7
ORVIBO Home App	9
Patents & Awards	10
Smart Home Stores	11
Real Estate Developers and Operators Cooperation	11
Worldwide Users	12

Products

Smart Central Control Panels	15
Smart Switches	29
Smart Lighting	43
Home Security & Sensors	57
Smart Shading	71
Smart HVAC	77



Gian Eye 2K
Smart Camera S1

Sky Dome Series Smart Light

Accent lighting
9W 3000K

3D Smart Lighting Curtain

MixPad X

Indoor temperature
26°C

Indoor
air quality 66 $\frac{\text{PM}_{2.5}}{\mu\text{g}/\text{m}^2}$

Music playback

Take a Chance

Little Dragon, Koisch

4:15 / 9:36

⏮ ⏪ ⏩ ⏭

Accelerating the Global Tech-residential Process with Technology and Aesthetics

ORVIBO is a global leading whole-house smart home solution provider since 2011, With the mission of "Accelerating the Global Tech-residential Process with Technology and Aesthetics".

ORVIBO innovatively developed a diverse range of industry-influential smart home products with more than 500 patents, and has established over 1600 stores, served more than 4.5 million households worldwide, bringing users a smart and aesthetic life experience.



Found in
2011



500+
Patents



1600+
Smart home stores



4.5M+
Users

ORVIBO is globally leading in the core categories of the smart home industry



The world's first smart central control screen
The sales volume for 4 consecutive years

NO.1

Three out of every five smart central control screens come from ORVIBO



China's smart mainless light in 2022
System sales

TOP 5

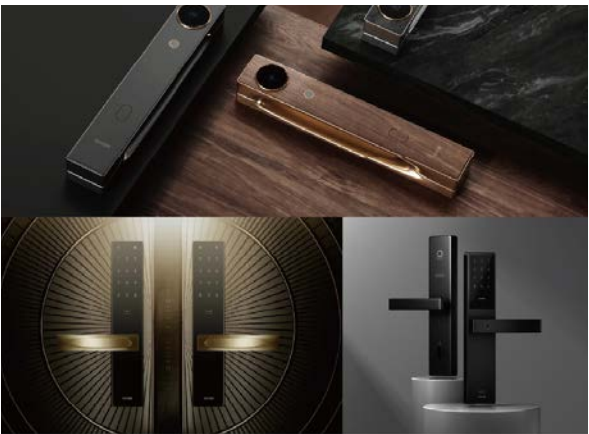
Innovative and phenomenal products:
Defy, Bach, Genie MixSwitch with annual sales of over one million



Smart switch category
The sales volume

NO.1

Innovative and phenomenal products:
Defy, Bach, GenieMixSwitch: annual sales exceed one million units



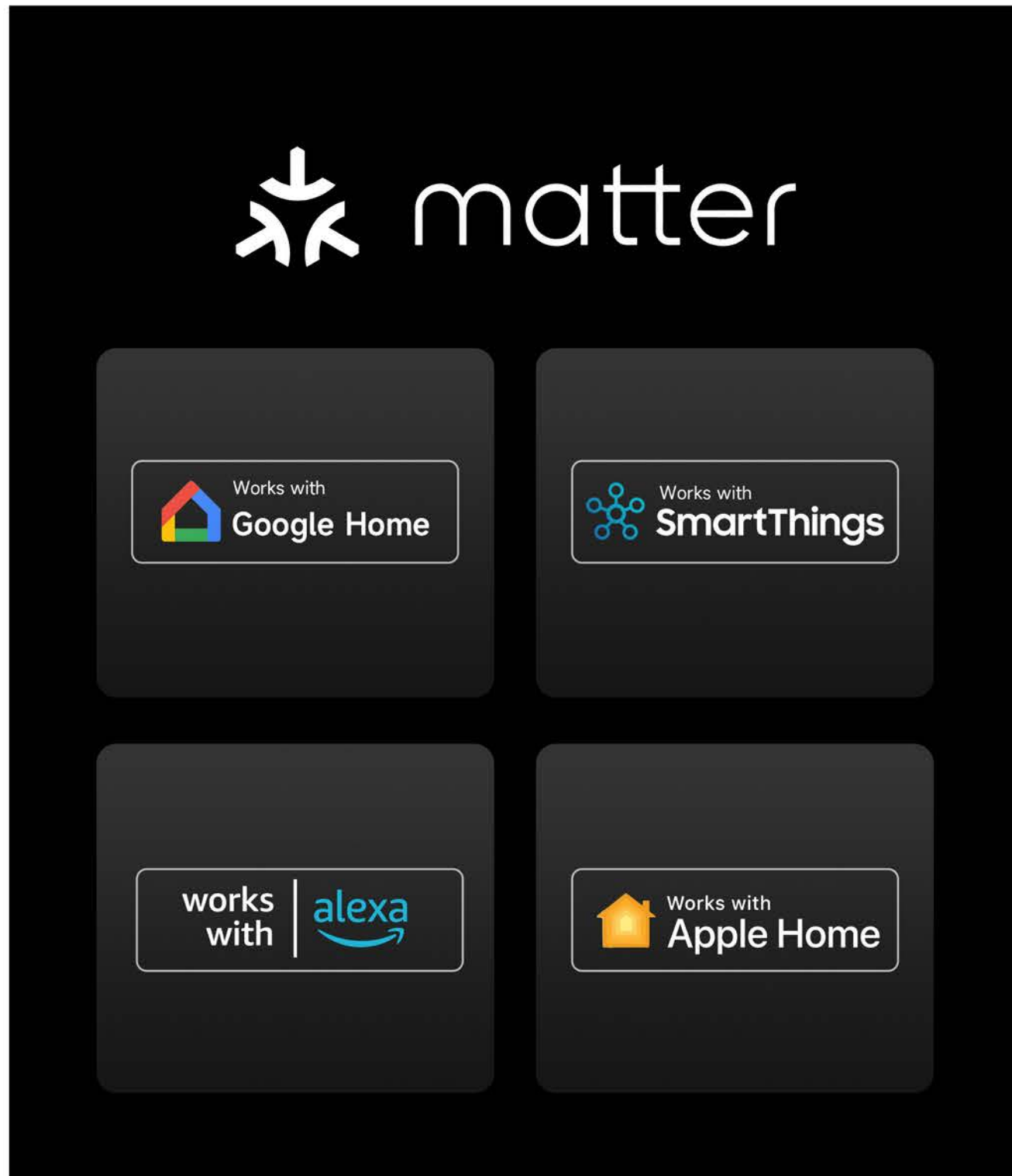
Smart door lock categories
Industry sales

NO.1

Top industry leader for two consecutive years

Cross-platform compatibility

Supports Matter Bridge and works with various smart home devices and platforms to make your life more convenient.



Secure, and stable HomeAI OS

Supports GPT and whole-house energy management, integrates large-scale AI technology, enabling home devices to have enhanced proactive intelligence and human-machine interaction capabilities, creating limitless OTA smart home possibilities.





ORVIBO Home

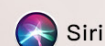
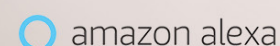
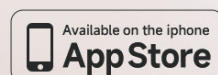
Smarter, Simpler and Safer

ORVIBO Home is an all-in-one IoT App that seamlessly connects your lighting, security and other home devices. With its intuitive design and simple controls, managing your home has never been easier.

Support 15 Languages: Chinese(Simplified/Traditional), English, Japanese, French, German, Spanish, Portuguese(Brazilian), Korean, Russian, Vietnamese, Turkish, Czech, Arabic.



ORVIBO Home



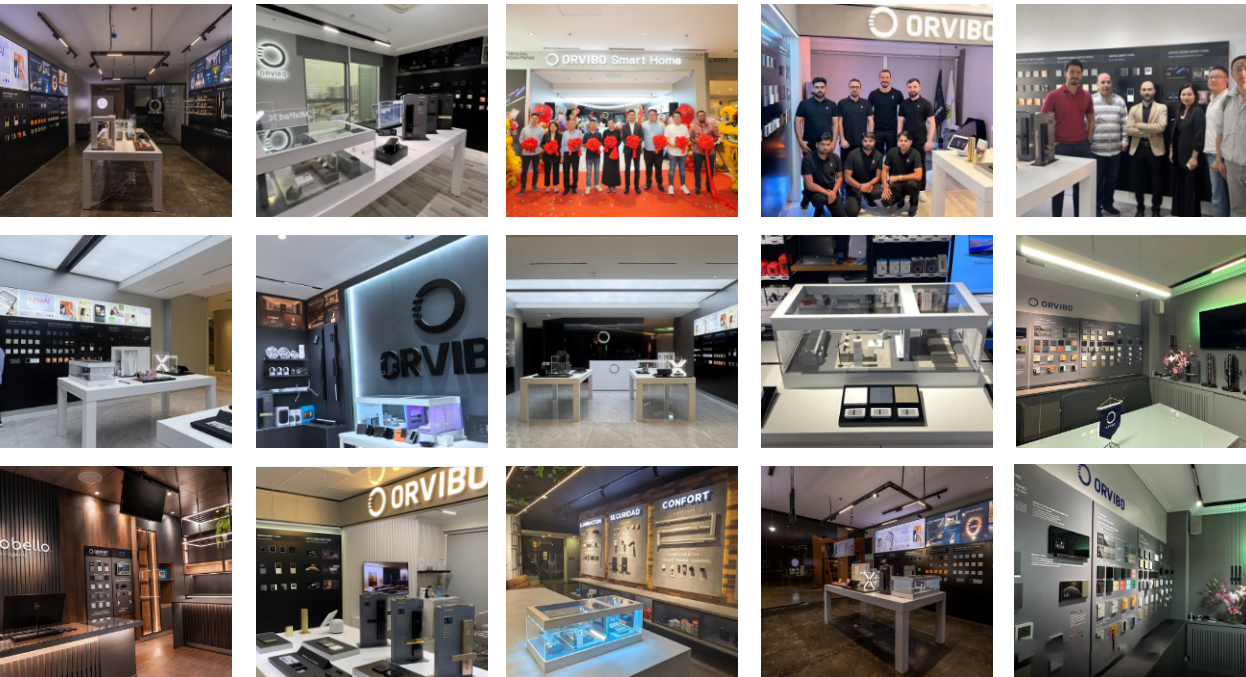
International IF gold award Won more than 80 international product design awards



ORVIBO has become the preferred smart home brand for real estate developers and operators



More than 1,600 smart home stores in over 100 countries and regions around the world



Over 4.5 million households worldwide



Saudi Arabia-Riyadh

One of the largest real estate projects in the Middle East, with over 200,000 apartments, which is fully equipped with ORVIBO smart home products



Saudi Arabia-Riyadh

Designed with fully intelligent scenarios, all 800+ apartments are equipped with ORVIBO smart home systems.



Saudi Arabia-Riyadh

340 apartments come standard with ORVIBO smart home products, providing users with a premium intelligent living experience.



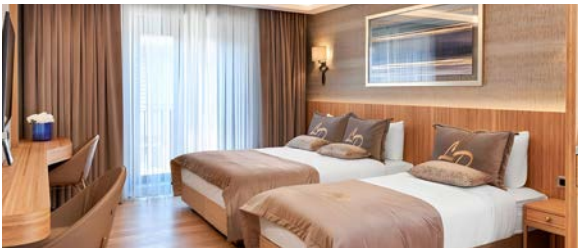
Vietnam-Ho Chi Minh

The largest project to date, with all 800 apartments fully equipped with ORVIBO smart home products, creating the ideal future home.



Philippines-Pasig

A new benchmark for top luxury residences, with approximately 400 homes fully equipped with ORVIBO smart home products.



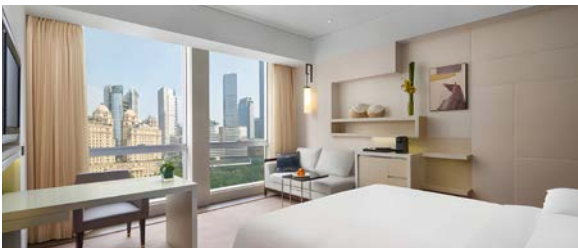
Mongolia-Ulaanbaatar

Over 1,500 residences equipped with ORVIBO smart home products, setting a new benchmark for smart home residences in Ulaanbaatar.



Georgia-Batumi

One of the largest projects in Batumi, with all 800 high-end residential apartments fully equipped with ORVIBO smart home systems.

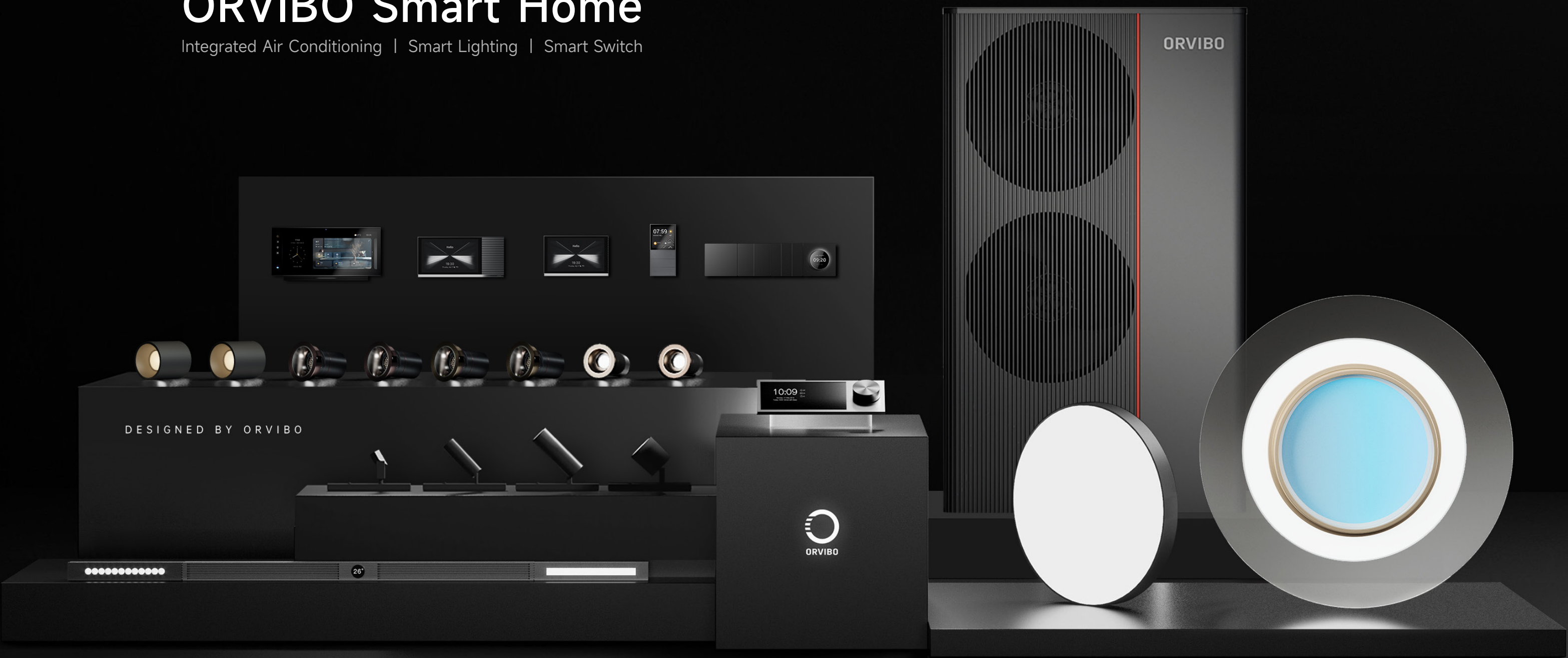


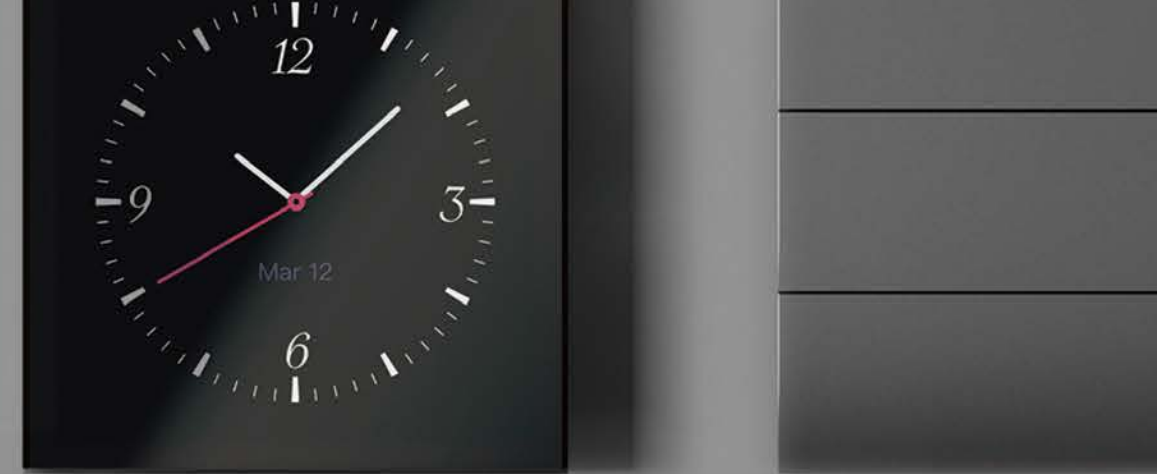
Georgia-Batumi

Luxurious residential area near Batumi, all 100 apartments are fully equipped with ORVIBO smart home systems.

ORVIBO Smart Home

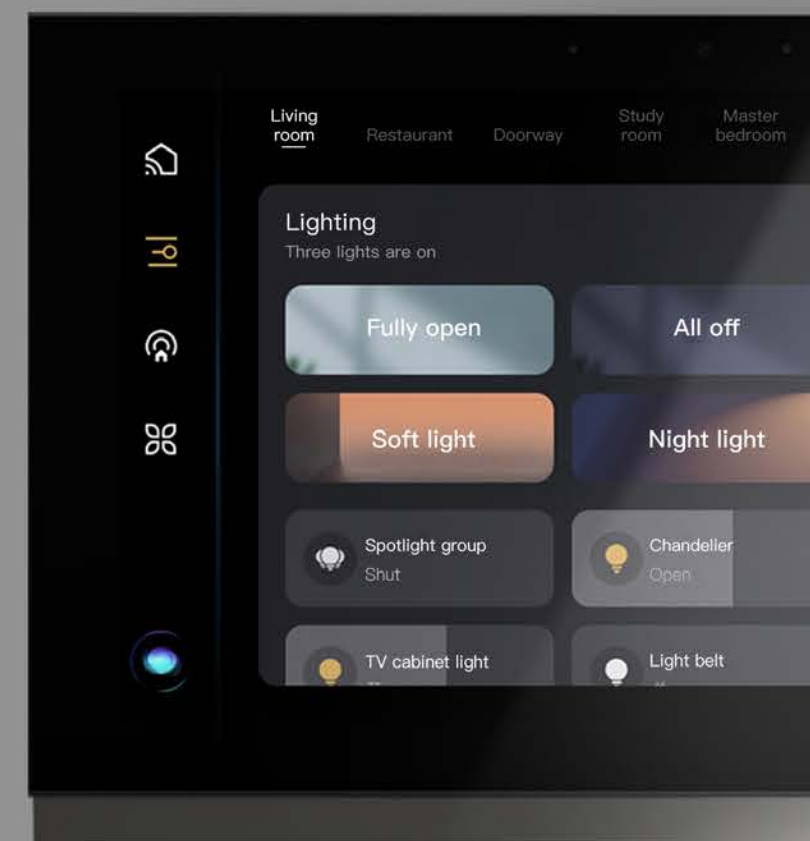
Integrated Air Conditioning | Smart Lighting | Smart Switch





Smart Central Control Panels

MixPad Series, MixDimmer

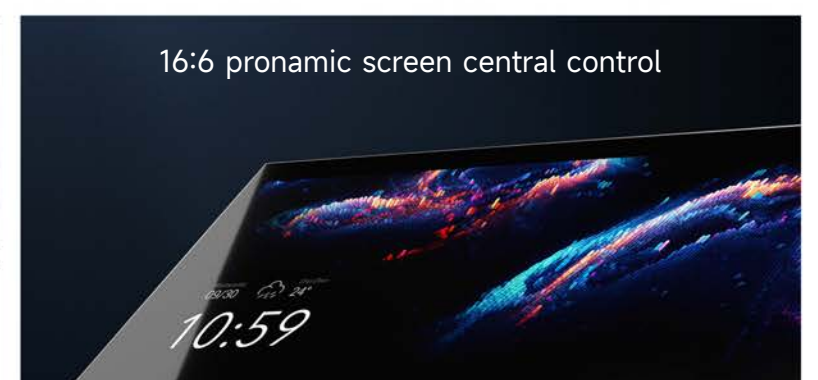


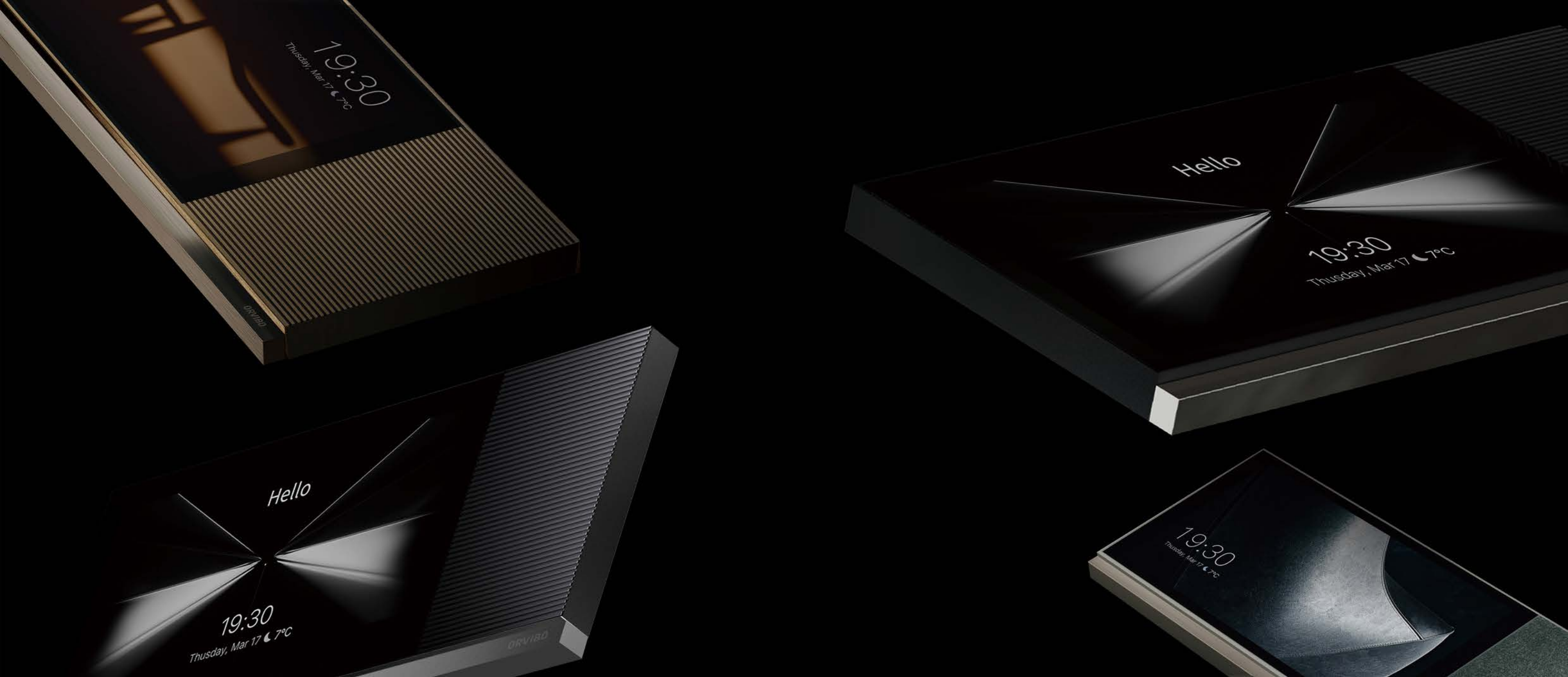


Smart Life in One Step

MixPad X - Pronamic Smart Panel

- 16:6 pronamic screen central control
12.3 inches, 170° ultra-wide view, 400 nits high brightness, anti-fingerprint.
- Smart living with one-screen control
Up to 300 Zigbee devices and thousands of smart home devices can be connected.
- Easy 10-meter voice interaction
Omnidirectional linear four-microphone array for clear communication up to 10 meters.
- One-click direct selection
Present 15 scenes on the same screen.

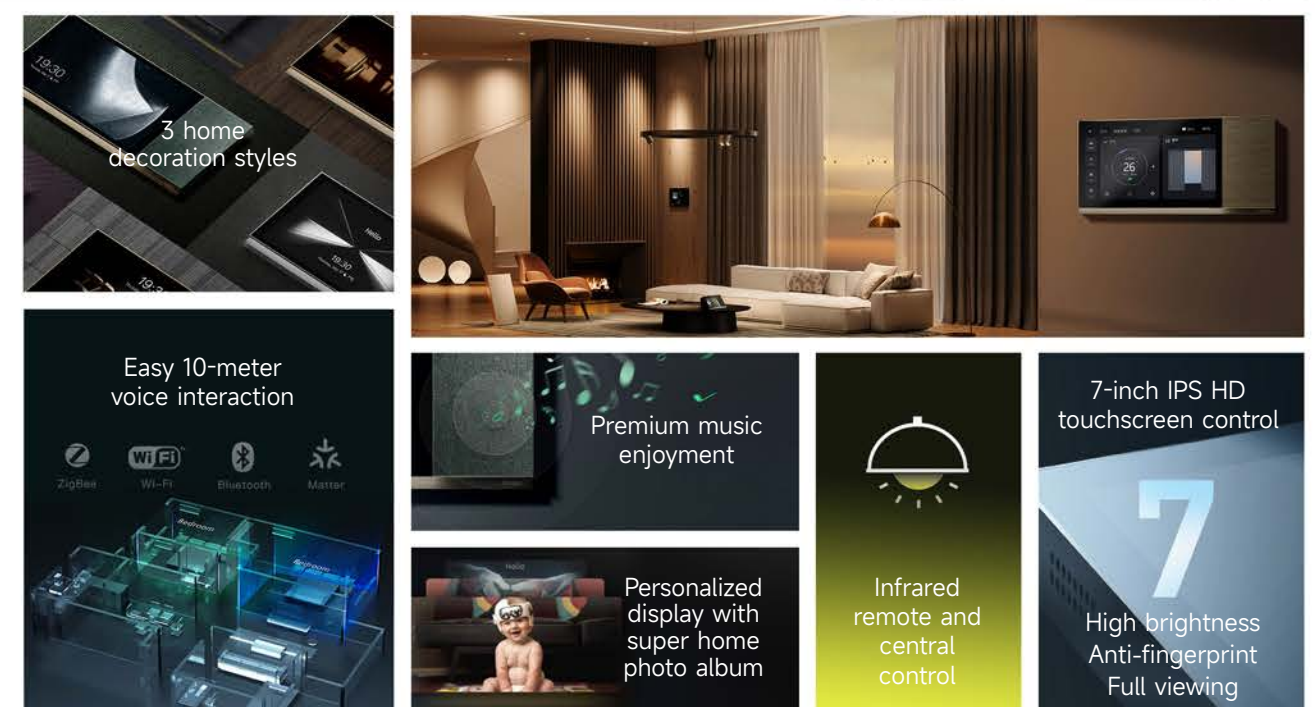




Tech Aesthetics Growing on Your Wall

MixPad 7 Ultra - Home Decoration Smart Panel

- 7-inch IPS HD touchscreen
170° ultra-wide view, 1024x600 resolution, anti-fingerprint.
- Infrared remote and central control
Native built-in 4-channel lighting control output and a 9600+ brand infrared control library.
- 3 home decoration styles
Walnut wood finish, smoked green fabric finish, silver aluminum finish.
- Easy 10-meter voice interaction
Omnidirectional linear four-microphone array for clear communication up to 10 meters.
- Personalized display with super home photo album
Beautiful images that match your decoration style.
- Premium music enjoyment
4+4 high-fidelity background music system.

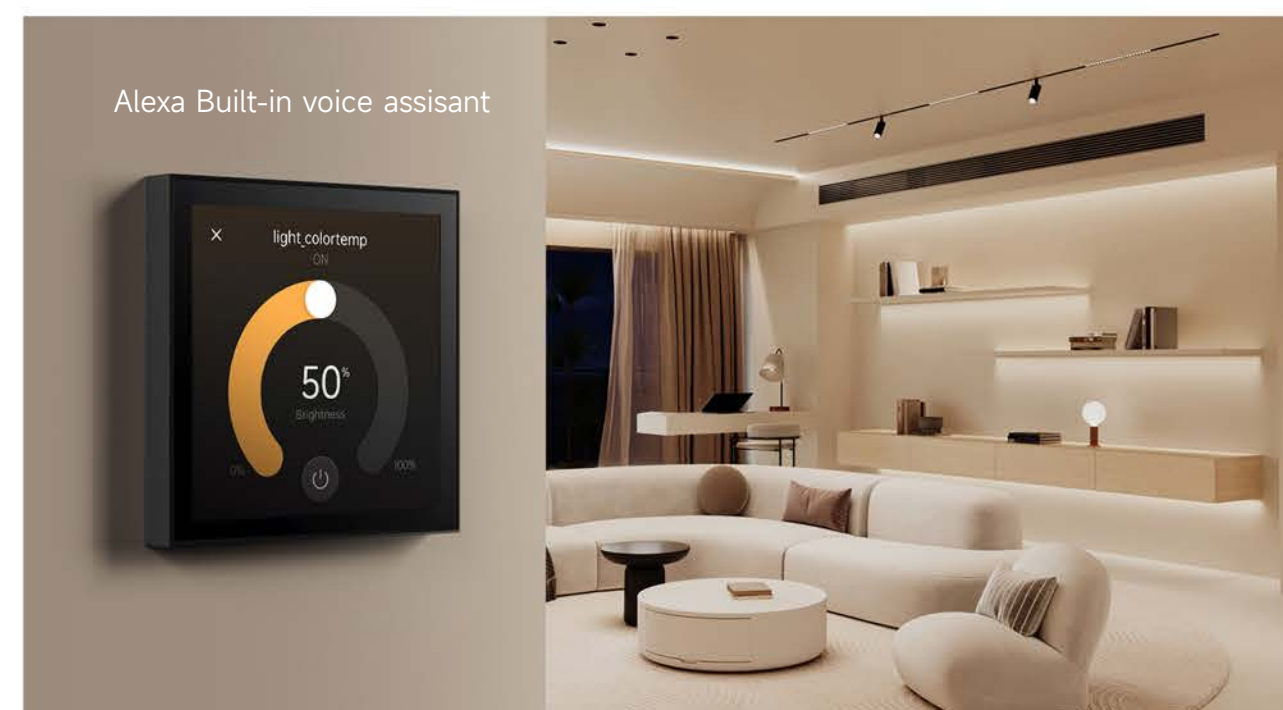
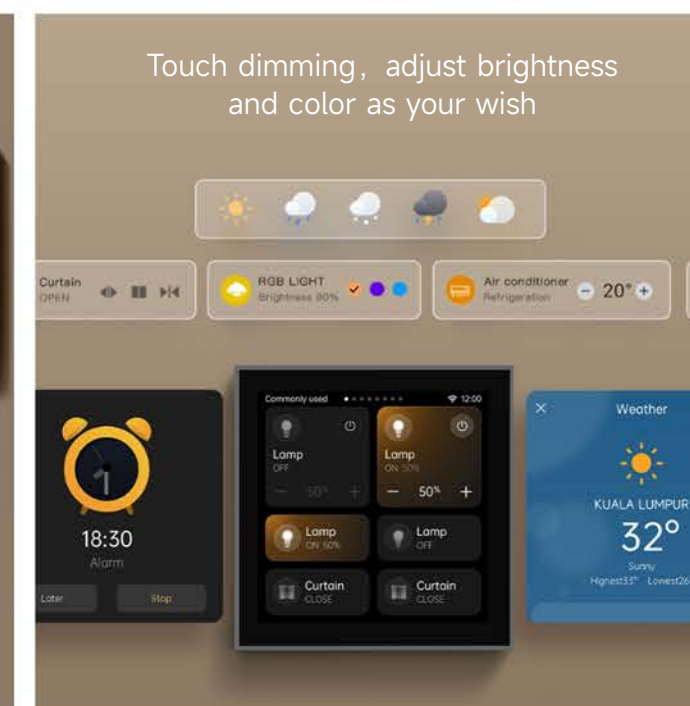
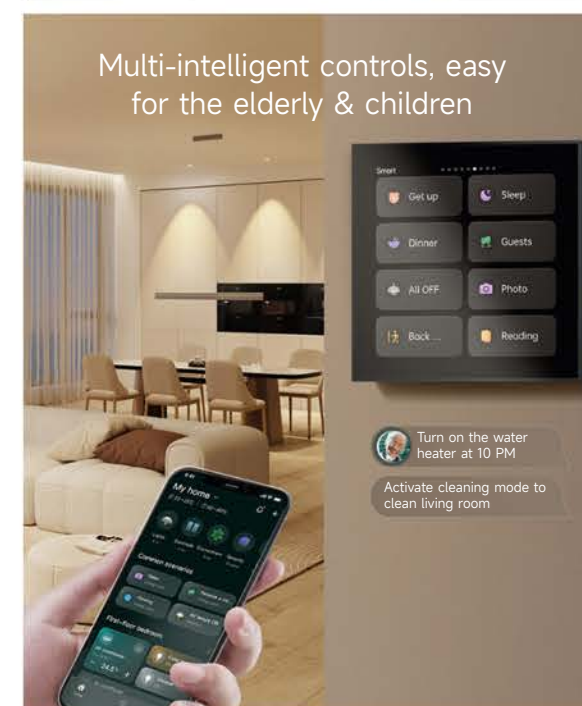




Touch Dimming, Voice Control

MixPad M5 - Smart Voice Control Panel

- Touch dimming, adjust brightness and color as your wish
Easy brightness and color adjustment.
- All-in-one control
Built-in 4-gang lighting control, and support light scene and light group control.
- Alexa Built-in voice assistant
Alarm settings, weather forecast, device control (light, curtain, air conditioner and etc.)
- Multi-intelligent controls, easy for the elderly & children
Voice control, timing / automation / scene control, APP remote control.

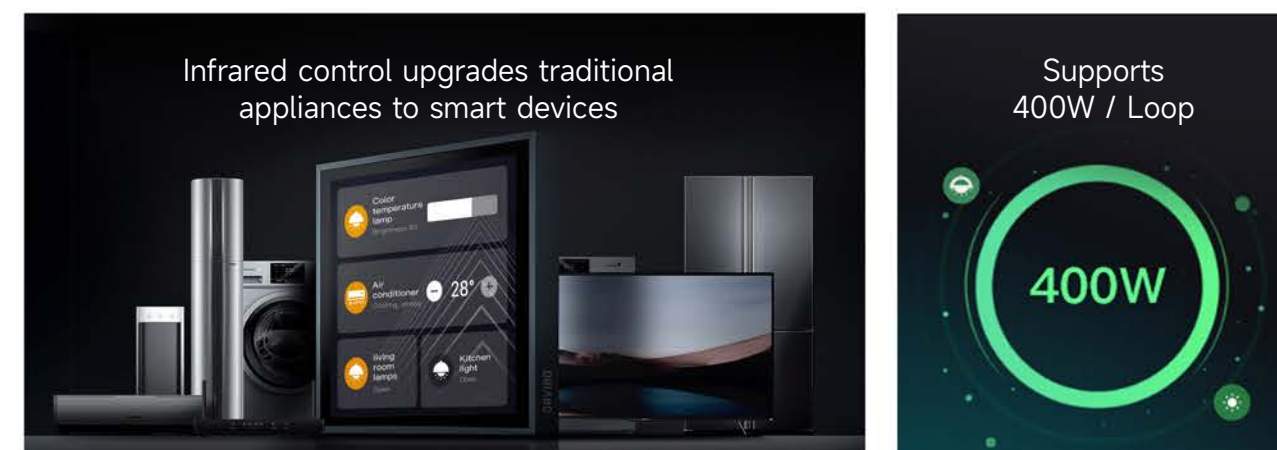
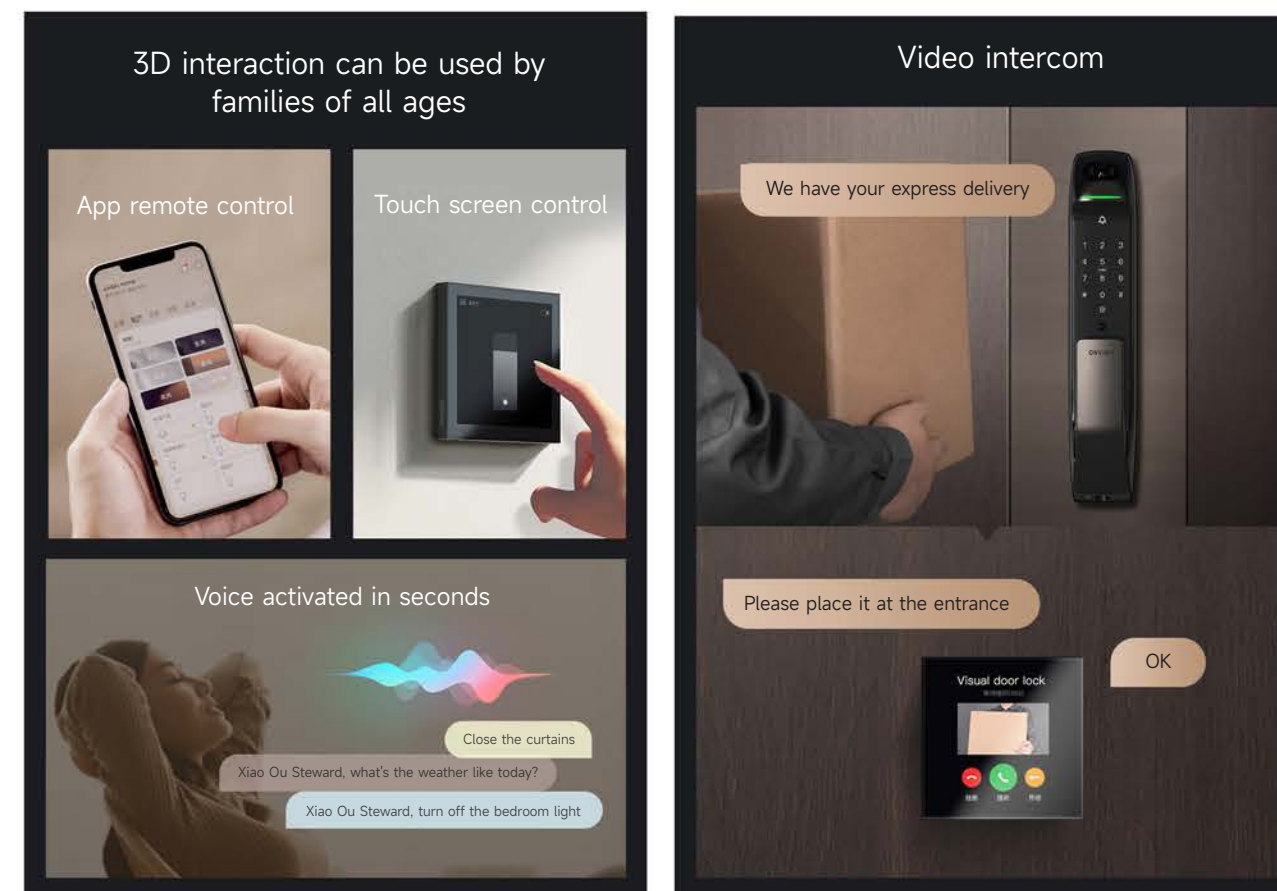




All in One, True Intelligence

MixPad M2 - Smart Voice Control Panel

- Dominate your large room with just one screen
Four-channel light control.
- Infrared control upgrades traditional appliances to smart devices
Control 9600 brands of infrared household appliances, with a range of up to 20 meters.
- Video intercom
Supports video intercom with people at door locks or in other rooms.
- Multi-protocol gateway interconnection
Support Zigbee, Wi-Fi, Bluetooth and etc.
- Touch screen, voice and App control, all family-friendly
Total load capacity up to 1200W, with a maximum single-channel load of 400W.
- Compatible with all high-power lights
Achieve comprehensive and efficient smart home control.

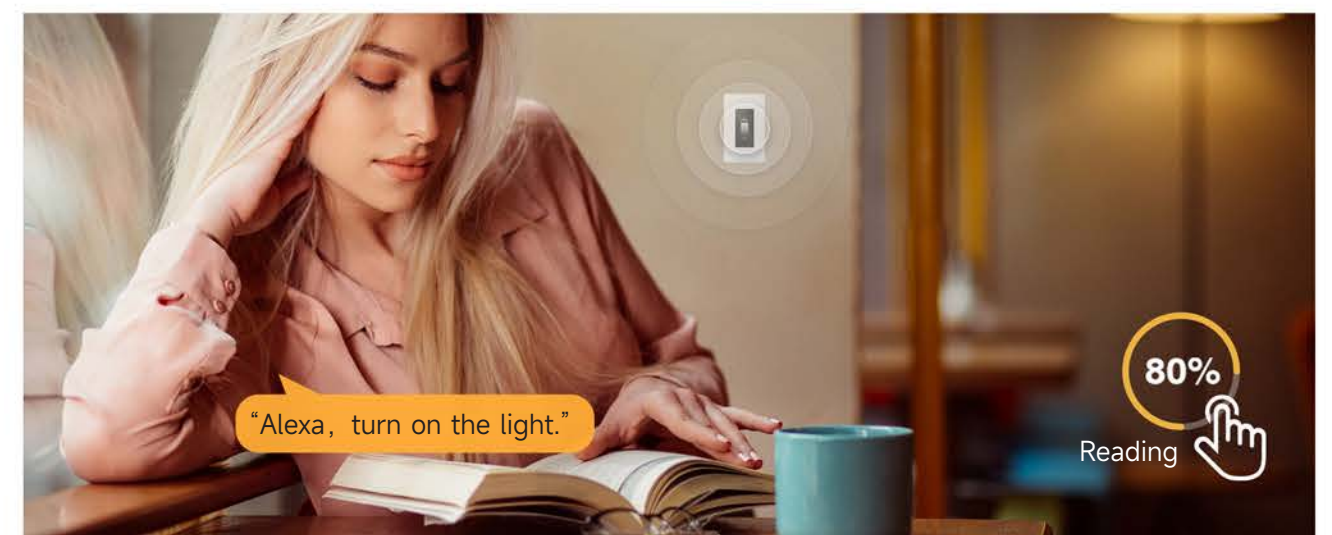
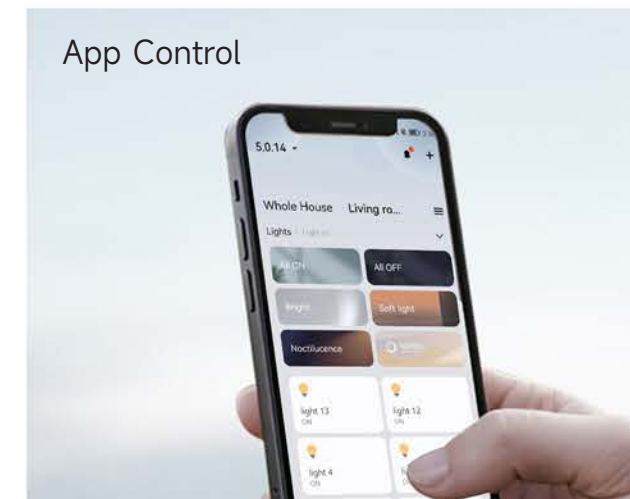
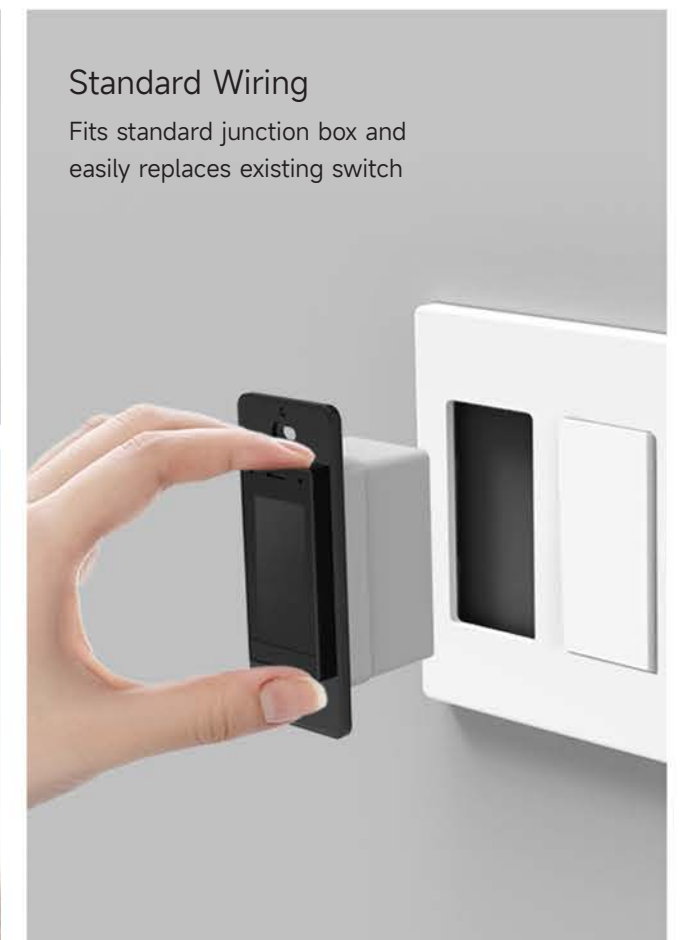
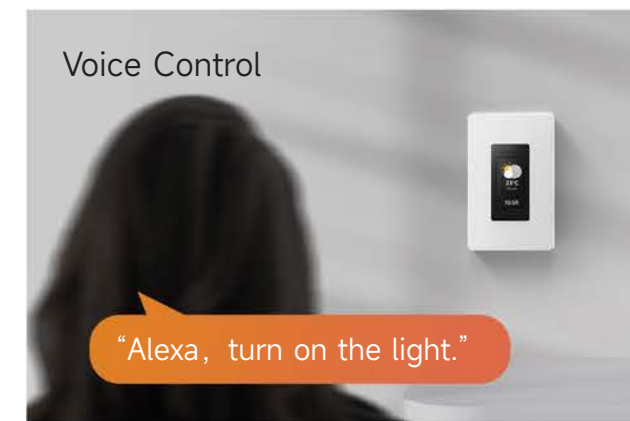




Touch Dimmer, Remote Control

MixDimmer D5- Smart Dimming Control Panel

- Touch dimmer control
Precisely adjust the brightness from 0% to 100%.
- Alexa Built-in voice control
Alarm settings, weather forecast, device control (light, curtain, air conditioner and etc.)
- Multi-intelligent controls, easy for the elderly & children
Voice control, timing / automation / scene control, APP remote control.



Poducts	MixPad X	MixPad 7 Ultra	MixPad M5	MixPad M2	MixDimmer D5
Model	V65X	V82X	V35X	V38X	DM50X
Dimensions	12.5 × 6.1 × 1.6 inches	9.33 × 4.37 × 0.45 inches	3.39 × 3.39 × 1.51 inches	3.39 × 3.39 × 1.51 inches	4.12 × 1.75 × 1.80 inches
CPU	Quad-core 64 bit Cortex-A35 , 1.5GHz	Quad-core 64-bit Cortex-A55 , 1.8GHz	RK3326-S	RK3326-S	RK3326-S
Screen size	12.3 inches	7 inches	4 inches	4 inches	1.9 inches
Resolutior	1920 × 720	1024 × 600	480 × 480	480 × 480	170 × 320
Microphonet	Linear dual-microphone array	Linear dualmicrophone array	Linear dualmicrophone array	Linear dualmicrophone array	Single Microphone Array
Speaker	2W × 2	4W high + 4W low + 2W mid, stereo	1W × 1	1W × 1	1W × 1
Protocol	WiFi 2.4GHz & 5GHz, Bluetooth 4.2, Zigbee 3.0, RS485	WiFi 2.4GHz & 5GHz, Bluetooth 5.1, Zigbee 3.0	WiFi 2.4GHz & 5GHz, Bluetooth 5.0, Zigbee 3.0	WiFi 2.4GHz & 5GHz, Bluetooth 5.0, Zigbee 3.0	2.4GHz Wi-Fi, Bluetooth 4.2 (not compatible with 5GHz Wi-Fi)
Input	100-240V, 50/60Hz	100-240V , 50/60Hz	100-240V, 50/60Hz	100-240V, 50/60Hz	100-120V, 60Hz
Load Type	Incandescent / LED lights	Incandescent, LED lights etc.	LED / Incandescent / CFL	LED / Incandescent / CFL	INC / HAL / LED / CFL / MLV/ ELV
Load Range	L1/L2 ≤ 200W Per Gang Total Power ≤ 400W	L1/L2/L3/L4 ≤ 200W Per Gang Total Power ≤ 600W	L1/L2 ≤ 400W Per Gang L3/L4 ≤ 200W Per Gang Total Power ≤ 800W	L1/L2 ≤ 400W Per Gang L3/L4 ≤ 200W Per Gang Total Power ≤ 800W	Max 250W INC / HAL Max 120W LED / CFL Max 250W MLV / ELV
infrared Control	Not Supported	Supported	Not Supported	Supported	Not Supported
Operating Environment	Temperature 0~45° C, humidity ≤ 90% RH	Temperature 0~45° C, humidity ≤ 90% RH	Temperature 0~45° C, humidity ≤ 90% RH	Temperature 0~45° C, humidity ≤ 90% RH	Temperature 32~113F, humidity ≤ 90% RH
Light control circuit	2-Gang	4-Gang	4-Gang	4-Gang	1-Gang
Light Sensor	Supported	Supported	Not Supported	Not Supported	Not Supported
Bottom Box Size	Single 86 Box	Single 86 Box	Single 86 Box	Single 86 Box	71.5 × 43 × 38.1mm

Smart Switch

Guass Series, MixSwitch Series





Five-dimensional Interaction, Ultimate Intelligent Control

Gauss Smart Knob Control Panel

- Retina-grade IPS HD screen
1.8 inches, clear visibility from 3 meters away.
- Ten-in-one multifunctional smart control
Easy management of gateways, voice screens, dimmers, scene panels, smart lights, curtains, air conditioners, floor heating, and fresh air systems.
- Five-dimensional interaction, built-in Zigbee gateway
Knob, voice, touch screen, touch keys, App control.
- The perfect partner for light with the 0.01% level precision dimming control
0-100% stepless dimming with high sensitivity.
- AI-equipped temperature control system
Integrated smart control of air conditioning, underfloor heating, hot water, and ventilation systems — all managed from one screen.
- Wide compatibility and support Matter
Works with Amazon Alexa, Google Home, Apple Home.

Ten-in-one multifunctional smart control
Easily control gateways, voice screens, dimmers, switches, scene panels, smart lights, smart curtains, air conditioners, floor heating, and fresh air systems.

Wide compatibility and support Matter
Works with Amazon Alexa, Google Home, Apple Home.

The perfect partner for light with the 0.01% level precision dimming control

AI-equipped temperature control system

Retina-grade IPS HD screen

Five-dimensional interaction, built-in Zigbee gateway



red dot award 2020
winner

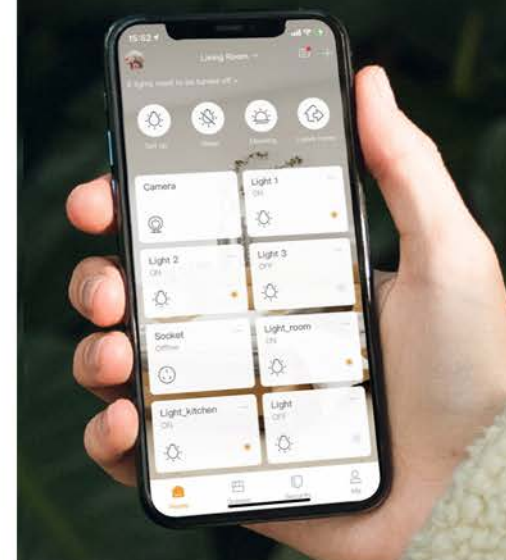


Free Definition, Intelligence within Reach

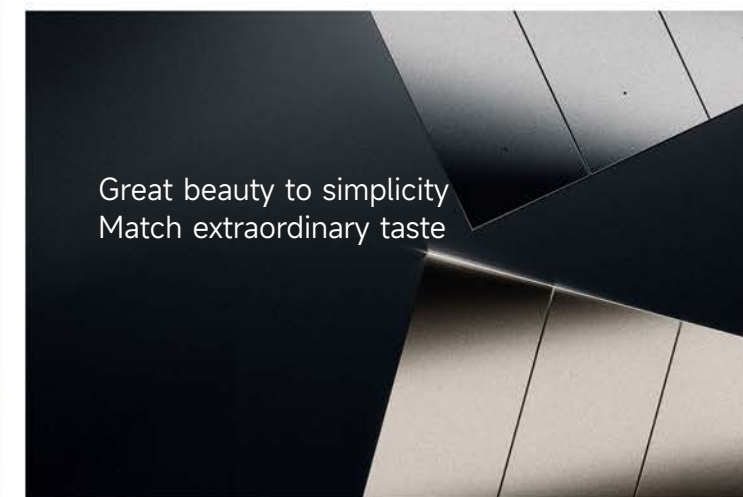
Super Smart Switch

- Available in three colors, multiple collocations
White, gray and golden, freely match a variety of home styles.
- Whole-house lighting, one-touch instant activation
One-touch to turn off all lights and support APP remote Control.
- Moveable remote control
Six custom buttons, no wiring, free placement.Control.
- Pair with other devices for more scene control
A switch for both basic lighting and scene panel control.
- Free definition of key functions
Equipped with original MixCtrl™, customize any number of buttons to control other devices or groups of devices.

Easy control from
mobile phone



Great beauty to simplicity
Match extraordinary taste



Removable
remote switch



Free combination
Group control



Gold									
White									
Grey									
	1 Gang	2 Gang	3 Gang	Five-hole socket	Battery version	16A 1 Gang	Five-hole fast charge	Five holes 1 Gang	Emergency button

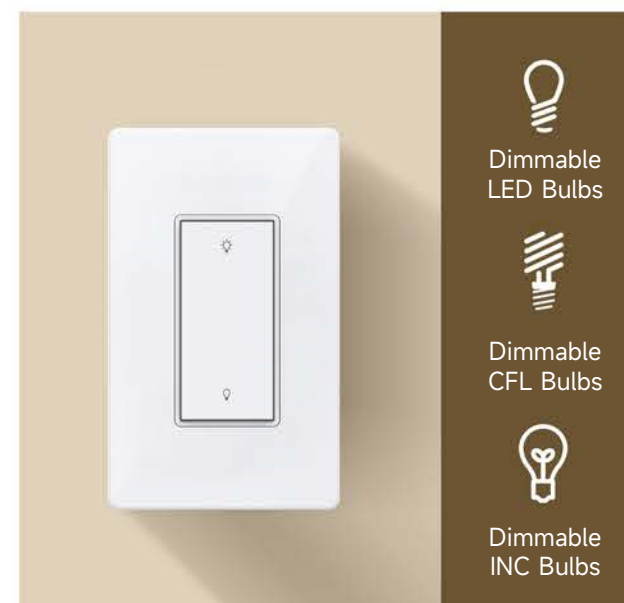
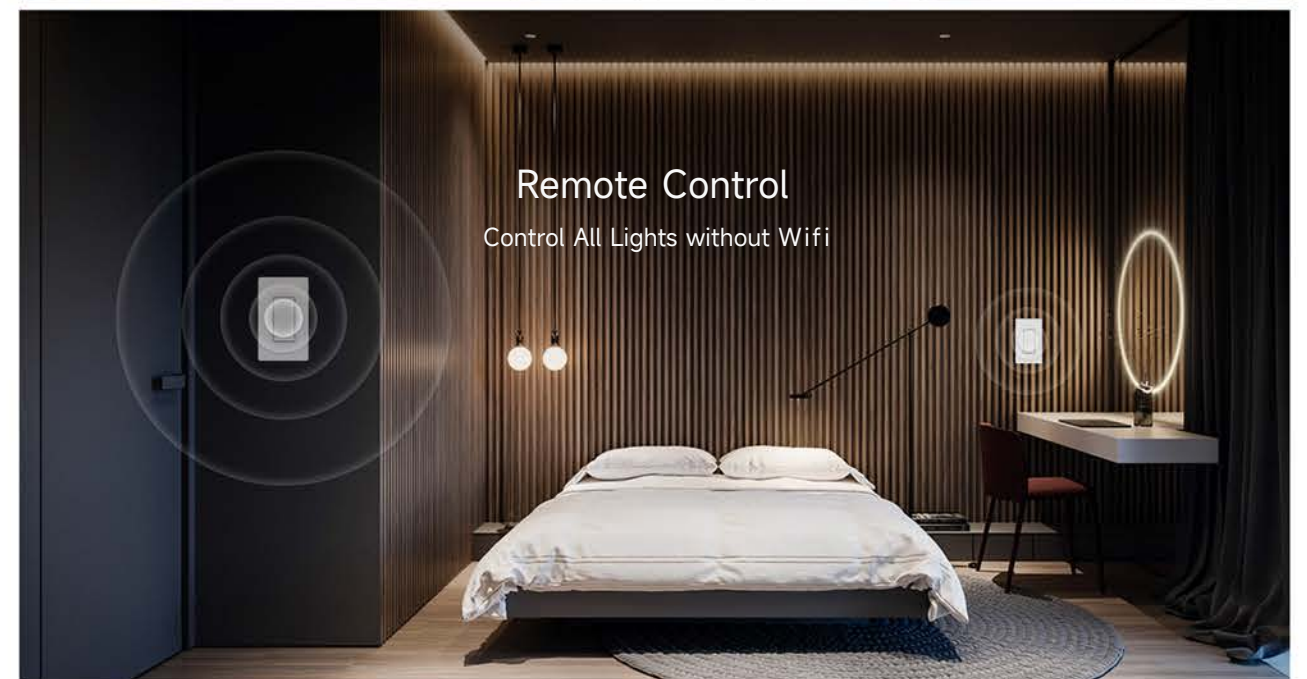
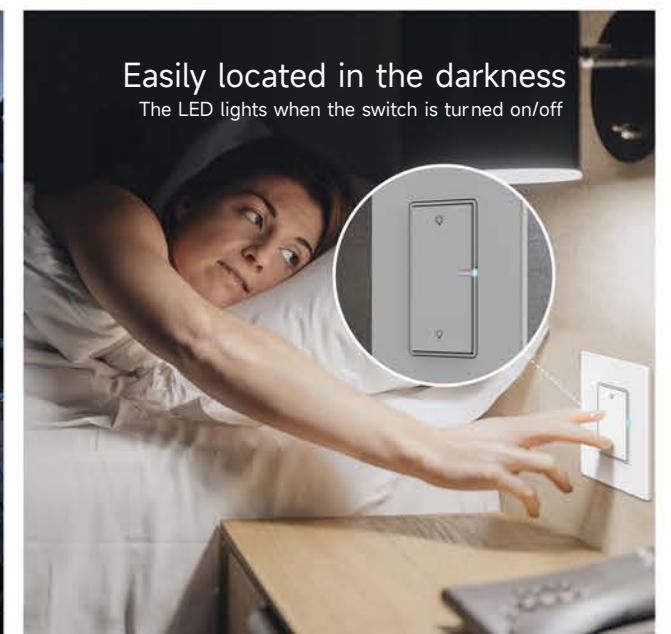


Smart Dimming, Versatile Control

Smart Wi-Fi Dimmer Switch

Remote & Bracket Kit

- **Multiple control methods**
Button, remote, App and voice control.
- **Flexible control with wireless 3-way experience**
No travel wires, control lights remotely from anywhere or mount on any wall.
- **Vacation mode**
The lights will randomly turn on and off when you're away to simulate someone being home.
- **Smart dimmer switch**
Precise dimming from 0% to 100%
- **One for all with wireless convenience**
One wireless remote control can turn on/off all switches at the same time without Wi-Fi.
- **Time management**
Schedule timers, countdowns, and sunrise / sunset in the App.





Versatile Control and Scheduled Automation

Smart Wi-Fi Light Switch

Remote & Bracket Kit

- Flexible control with wireless 3-way experience

Upgrade effortlessly with no travel wires. The remote can control lights from anywhere or mount on any wall.

- Vacation mode

The lights will randomly turn on and off when you are away from home to create a scene of someone in your home.

- Multiple control methods

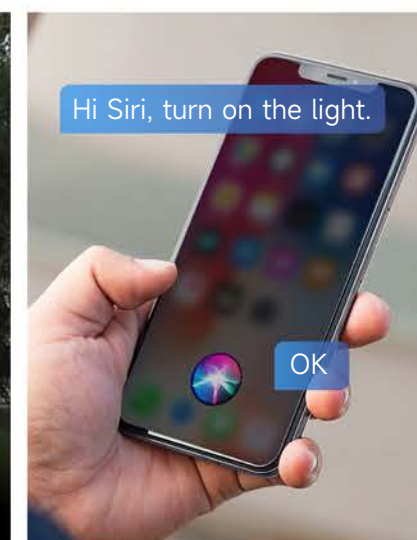
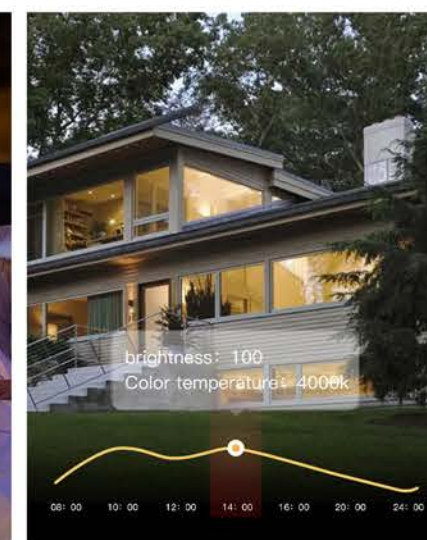
Button, remote, App and voice control.

- One remote for complete wireless control

Turn all switches on or off simultaneously without Wi-Fi.

- Time management

Schedule timers, countdowns, sunrise, and sunset functions in the app to fit your daily routine.





Intelligent Upgrade, Remote Control

Smart In-wall Switch

- Support Zigbee protocol
Realize the intelligent upgrade of the ordinary switch panel.
- Compact and easy assembly
It can be installed in the 86-type switch bottom box.
- Intelligent remote control
Control lights by smart phone.

Compact and easy assembly

It can be installed in the 86-type switch bottom box.



Support Zigbee protocol

Realize the intelligent upgrade of the ordinary switch panel.



Intelligent remote control

Control lights by smart phone.



Poducts	Guass smart knob control panel	Mixswitch super smart switch	Smart Wi-Fi Dimmer Switch	Smart Wi-Fi Light Switch	In-wall Switch (single live)
Model	GV10	1-Gang: T40W1Z、T40W1ZG、T40W1ZW 2-Gang: T40W2Z、T40W2ZG、T40W2ZW 3-Gang: T40W3Z、T40W3ZG、T40W3ZW 4-Gang: T40W4Z、T40W4ZG、T40W4ZW	A11 + EU1254	A10 + EU1254	R20W2Z
Dimensions	3.39 × 3.39 × 1.51 inches, 1.8 inches screen	3.39 × 3.39 × 0.39 inches	4.21 × 1.73 × 1.61 inches	4.21 × 1.73 × 1.61 inches	1.81 × 1.98 × 0.71 inches
CPU	RK3326	/	/	/	/
Microphone	Linear dual-microphone array	/	/	/	/
Speaker	1W × 1	/	/	/	/
Protocol	WiFi, Bluetooth, Zigbee 3.0	Zigbee	WiFi 2.4GHZ, 902MHz RF	WiFi 2.4GHZ, 902MHz RF	Zigbee
Input	100-240V~, 50/60Hz	100-240V~ , 50 / 60Hz	100-120V~, 60Hz	100-120V~, 60Hz	100-240V~, 50/60Hz
Load Range	L1 / L2 ≤ 400W Per Gang Total Power ≤ 800W	400W Per Gang 1-Gang:Total Power ≤ 400W 2-Gang:Total Power ≤ 600W 3-Gang:Total Power ≤ 600W 4-Gang:Total Power ≤ 600W	300W INC, 200W LED or CFL	500W INC, 250W LED or CFL	incandescent / halogen MAX 200W / Per Gang; LED / fluorescent MAX 100W / Per Gang
Operating Environment	Temperature 0-45° C humiditv ≤ 90% RH	Temperature -20°C~ 60°C, humiditv ≤ 85% RH	Temperature -20°C~ 60°C, humiditv ≤ 85% RH	Temperature -32°C~ 122°C, humiditv ≤ 90% RH	Temperature -20°C~ 60°C, humiditv ≤ 80% RH
Light Control Circuit	2-Gang	1-Gang, 2-Gang, 3-Gang, 4-Gang	1-Gang	1-Gang	2-Gang

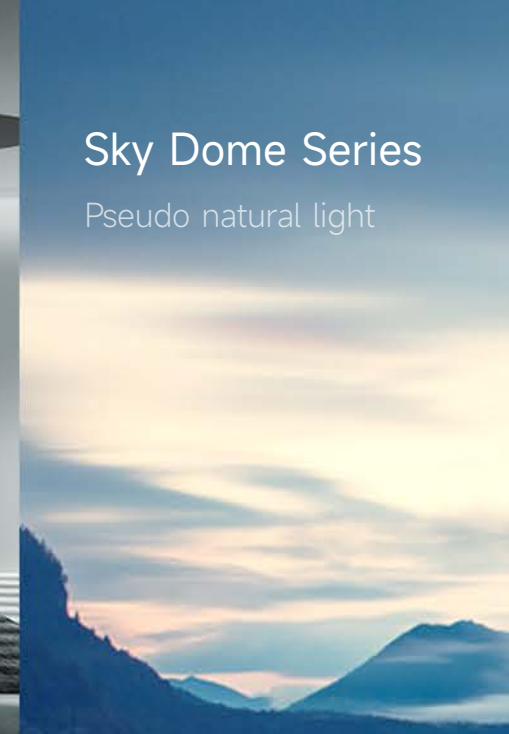


Super Smart Lighting Lives Up To Love



Sky Dome Series

Pseudo natural light



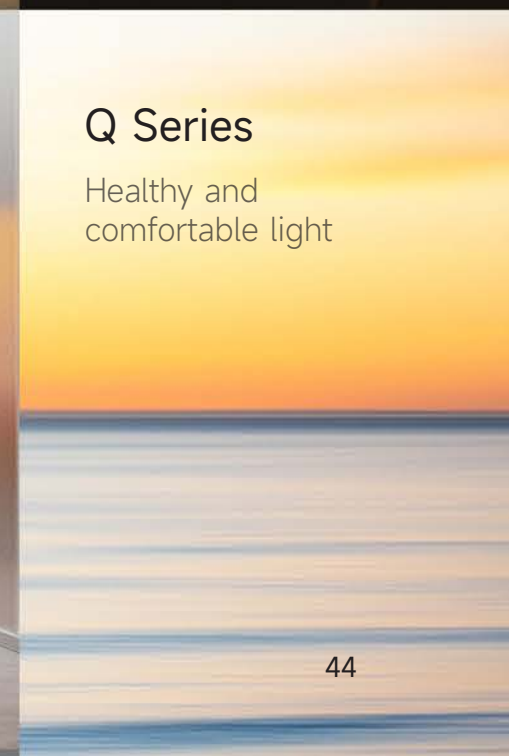
S Series

Museum grade
professional light



Q Series

Healthy and
comfortable light





Natural Lighting, Ultimate Aesthetics

Sky Dome Pro Ceiling Light

- Advanced tech for exceptional lighting experience
Featuring a four-layer optical design and 1750 precision components.
- Intelligent control
2700K-6500K color temperature and 1%-100% brightness are adjustable.
- Soft light protects eyes
Avoiding glare with UGR < 16 and light uniformity > 80
- Protect children's vision with beneficial blue light at 480nm.
Adopting exclusive LED light formula, highly matching the blue sky spectrum.
- 6 exclusive emotional lighting experiences
Featuring 6 effects, including morning glow, sunrise, aurora, sunset, and night glow.

Parameter

Power	135W	Product Dimensions	D1066 * H122mm	Product Materials	PMMA; aluminum; iron art
UGR	UGR<16	Installation Method	Ceiling mount	Color Rendering Index	Ra >90
Input	110V-240V~50/60Hz	Warm-up Time	0s to 10s (settable via APP)	Lumen	≥ 6600lm
Color Temperature	2700K-6500K; 16 million colors RGBW optional	Dimming Range	0% to 100%	Communication Protocol	WiFi, Bluetooth
Operating Environment	Temperature: -20° C to 40° C, Humidity: 20%-90% RH	Blue Light Hazard Class	RG0		



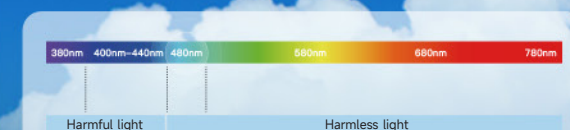
Innovative interactive dimming follows the feeling



Advanced tech for exceptional lighting experience



The first intelligent main light in China to receive TÜV Rheinland certification



Protect children's vision with beneficial blue light at 480nm.

Source: Sichen Visual Effect - One of the Top Ten Discoveries in the World in 2002



Advanced Anti-glare Filtration, Museum-grade Illumination

S Series - Anti-glare Smart Spotlight S10

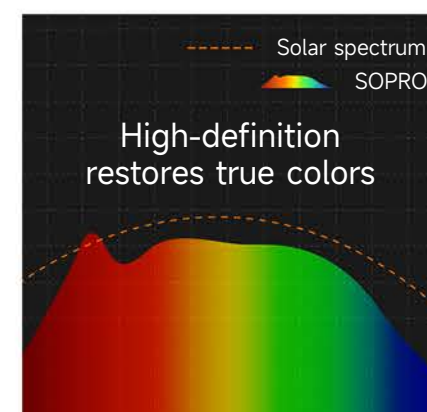
- Advanced four-layer anti-glare filtration
TIR lens, PRT diffusion film, honeycomb grid, deep reflector cup, UGR < 9
- 0.01% precision in color temperature control
0-100% dimming, 2700K-6000K color temperature adjustment.
- Gold conductivity for efficient light emission
Gold wire used within the chip enhances optical efficiency by 15%.

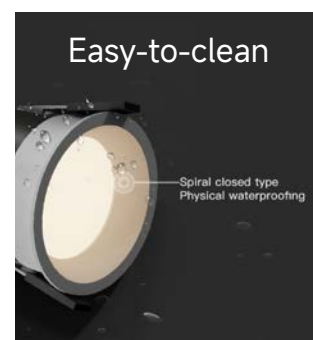
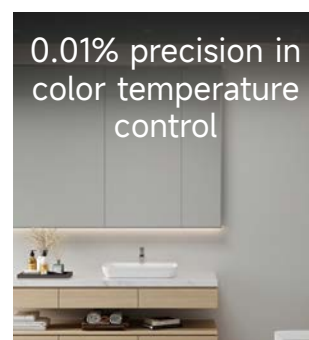
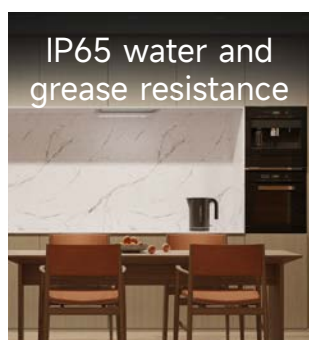
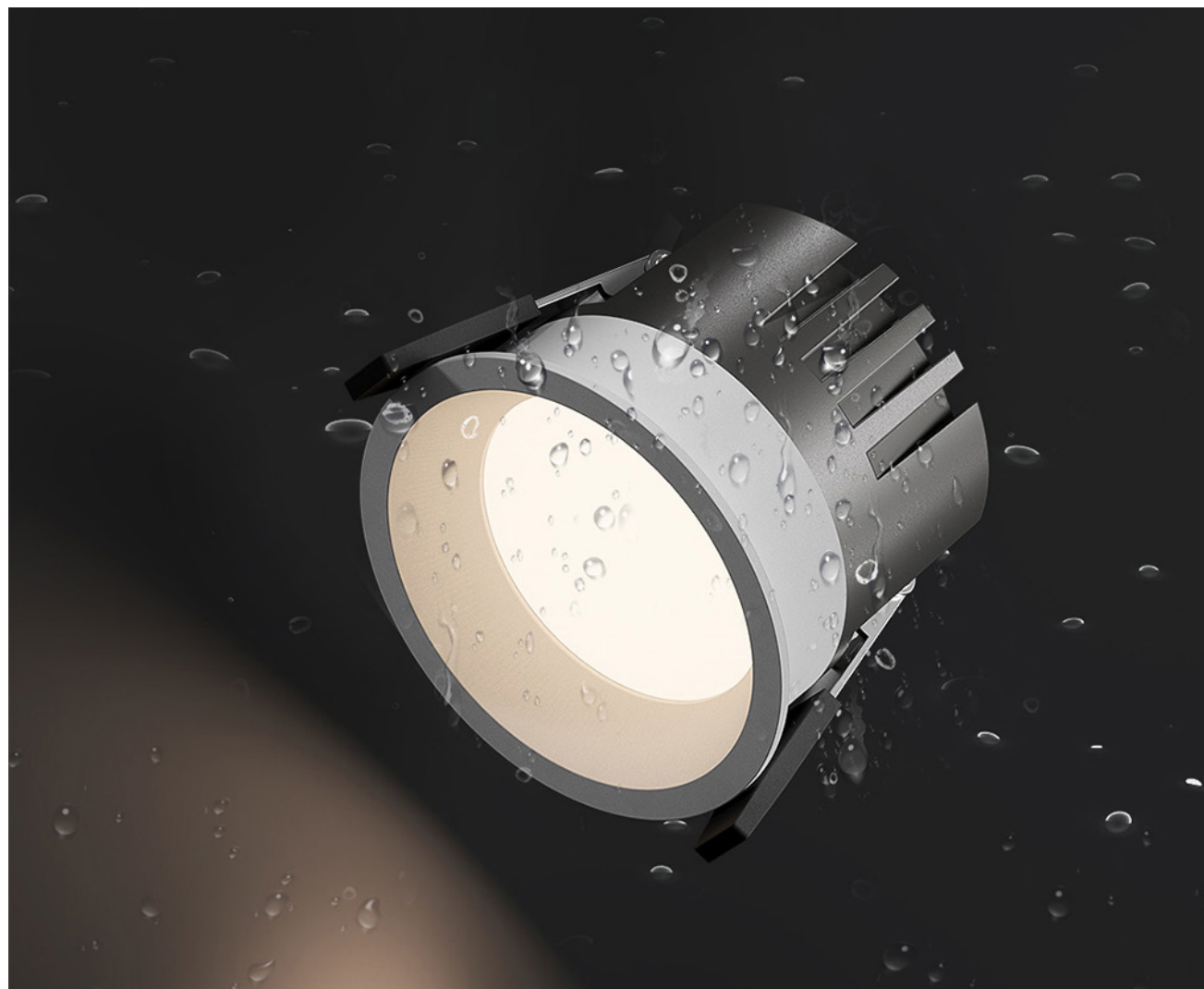


10,000-level color
colortemperature control



Real gold conductive
anti-oxidation

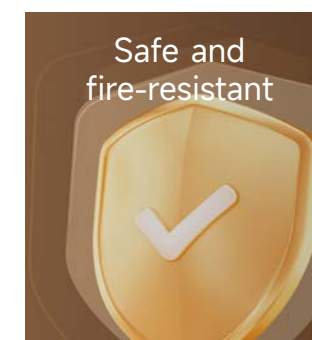
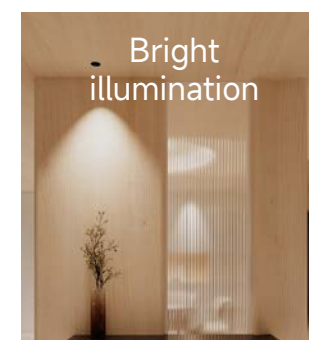
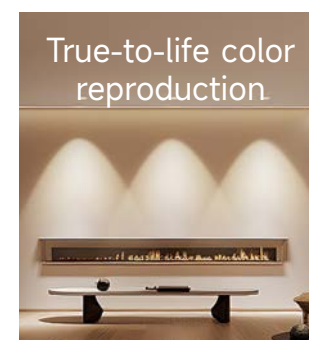




Superior Water and Grease-proof for a Prime Pick in Kitchens and Bathrooms

S Series - Waterproof Smart Downlight S10

- IP65 water and grease resistance
Four-layer nano-coating, suitable for bathrooms and kitchens
- 1.5cm deep anti-glare cup
High visibility, non-glaring, wide projection area.
- 0.01% precision in color temperature control
0-100% dimming, 2700K-6000K color temperature adjustment.
- Easy-to-clean
Toughened glass surface



Zero Ghosting, Glow with Clarity and Safety

Guass series- Anti-glare Smart Spotlight Q10

- Bright illumination
Luminous flux increased by 60%.
- Advanced anti-glare, non-dazzling
KR micro-prism technology, UGR < 10.
- True-to-life color reproduction
Ra90 museum-grade color rendering, zero ghosting.
- Safe and fire-resistant
V0-rated fire-resistant driver casing.

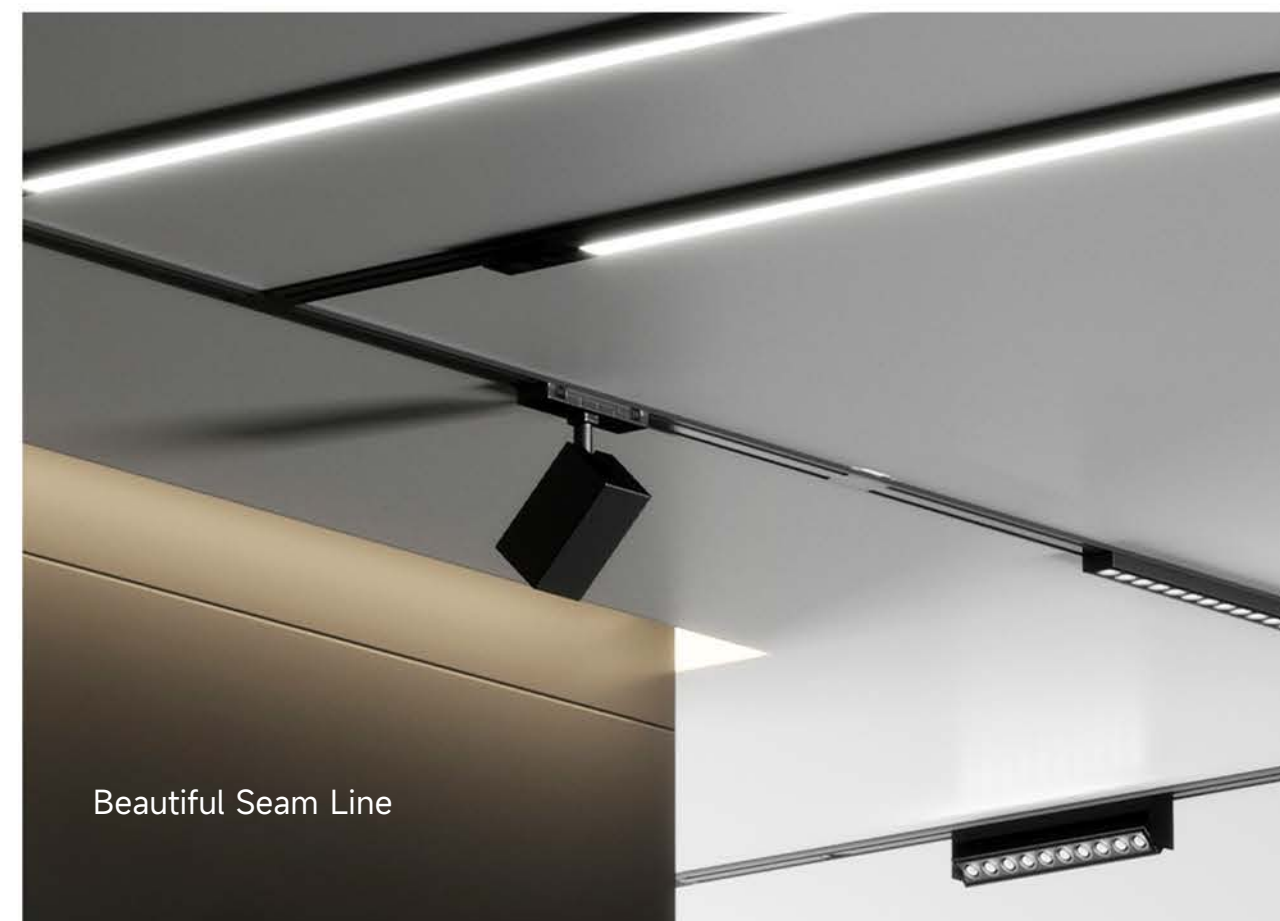
Product	Anti-glare Smart Spotlight S10	Waterproof Smart Downlight S10	Anti-glare Smart Spotlight Q10
Power	7W, 12W	9W	9W
Aperture Size	Φ55mm(7W), Φ75mm(12W)	Φ75mm	Φ75mm
Product Dimensions	Φ67 × H77mm(7W), Φ85 × H103mm(12W)	Φ85 × 106mm	Height ≤ 80mm, face ring edge width 6.5mm
Lumen	7W 350lm, 12W 600lm	450lm	≥ 630lm
Installation Methods	Recessed or Surface-mounted (optional)	Recessed	Recessed
Product Materials	Aviation Aluminum + PC	Aviation aluminum + glass	Aviation Aluminum + PC
Color Rendering Index	Ra>90	Ra>90	90
UGR	UGR<13	/	UGR ≤ 10
IP Rating	/	IP65	IP20
Beam Angle	15°, 24°, 36°	90°	24°, 36°
Communication Protocol	ZigBee	ZigBee	/
Color Temperature	2700~6000K	2700~6000K	4000K
Operating Environment	Temperature: -20°C to +50°C Humidity: 20-90% RH	Temperature: -20°C to +50°C Humidity: 20-90% RH	Temperature: -20°C to -40°C Humidity: 20-90% RH



Dynamic Illumination, Accurate Color Rendering

S Series - Smart Magnetic Track Light

- Color rendering rivals natural light
High CRI up to 90Ra.
- Multiple applications with three major lighting categories
Magnetic tracklight, gridlight, spotlight.
- 0.01% precision in color temperature control
0-100% dimming, 2700K-6000K color temperature adjustment.
- Ultra-long lifespan up to 10 years
Crafted from dense aerospace-grade aluminum.



Beautiful Seam Line



SPWM intelligent control light



6mm Ultra thin



Vientiane Track
Accessories

Products	Smart Magnetic Tracklight	Smart Magnetic Gridlight	Smart Magnetic Spotlight
Power	15W, 8W	15W, 8W	15W, 8W
Dimensions	435 × 22 × 25mm (15W), 220 × 22 × 25mm (8W)	435 × 22 × 25mm (15W), 220 × 22 × 25mm (8W)	60 × 156mm (15W), 38 × 146mm (8W)
Lumen	≥ 750lm (15W), ≥ 400lm (8W)	≥ 960lm (15W), ≥ 400lm (8W)	≥ 850lm (15W), ≥ 350lm (8W)
Color Rendering Index	Ra >93(15W), Ra >90(8W)	Ra >90	Ra >90
Beam Angle	95°	30°	24°
Color Temperature	2700~6000K	2700~6000K	2700~6000K
Dimming Method	PWM Digital Dimming	PWM Digital Dimming	PWM Digital Dimming
Dimming Frequency	20kHz	20kHz	20kHz
Dimming Depth	0.01%	0.01%	0.01%
Lamp Body Material	Aviation Aluminum + PC	Aviation Aluminum + PC	Aviation Aluminum + PC

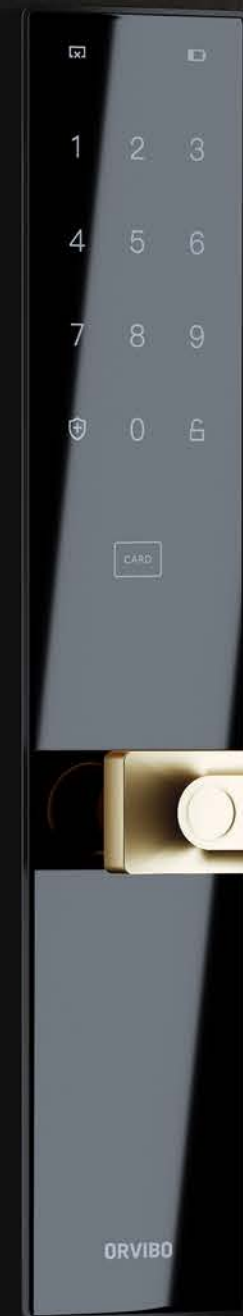
Smart Door Locks, Smart Cameras, Sensors

Home Security and Sensors



Grandpa
12:45 Authorization of Remote
Temporary Password

At 2: 25, the door lock is abnormal.
Do you want to start the alarm mode?



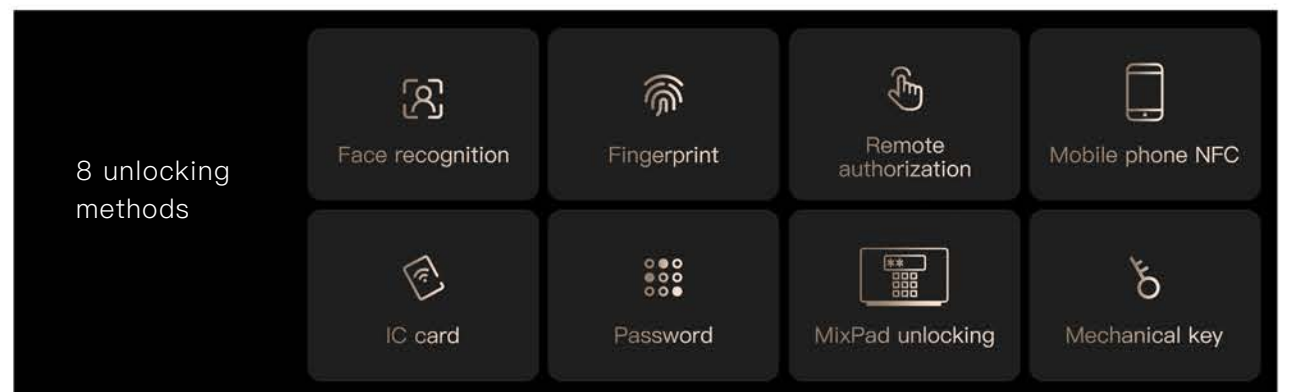
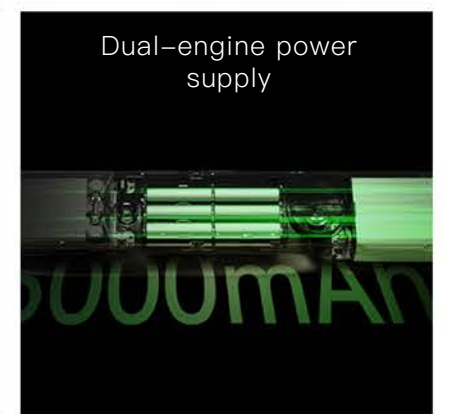
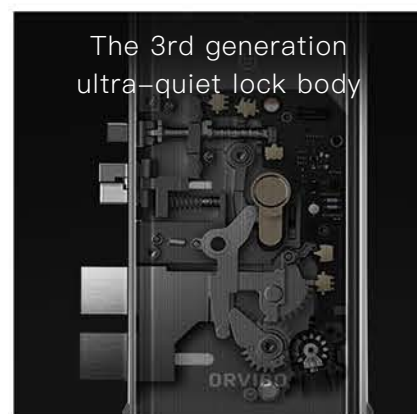
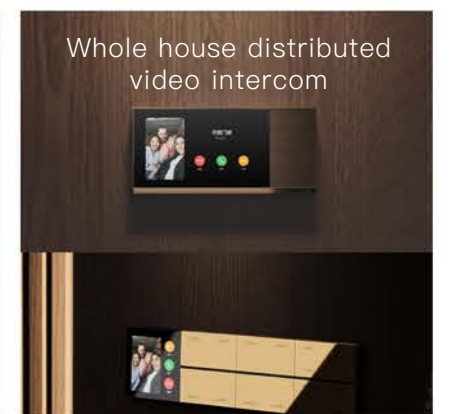
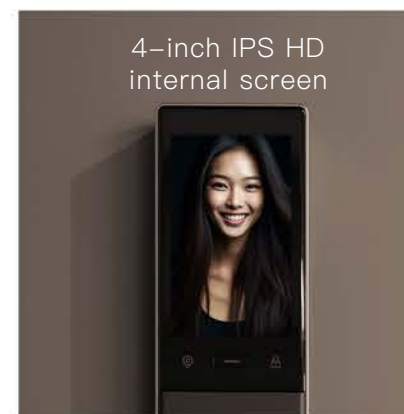
ORVIBO



AI Face Recognition Meets Smart Visual Access

V5 Face Smart Door Lock

- 7 types of security protection
Child lock mode, away mode, and multiple alarms for hijacking, anti-pry, anti-test opening, low battery, and personnel.
- AI 3D face recognition, unlock within 1 second
Face misrecognition rate < 0.001%, financial-grade security with BCTC certification.
- Whole-home distributed video intercom
4-inch IPS HD internal screen.
- Dual-engine power supply
365 days of battery life
- 8 unlocking methods
Face recognition, fingerprint, Mixpad unlocking, mobile phone NFC, IC card, password, remote authorization, mechanical key.
- The 3rd generation ultra-quiet lock body
Planetary gear, ultra-quiet fully automatic lock body, the opening and closing sound is less than 60 decibels.
- 1080P/165° full-color monitoring day and night
Camera-level F1.6 large aperture.





Secure your home with seamless protection

Smart Door Lock C1

- 6 unlocking methods
Fingerprint, IC card, mobile phone NFC, password, remote authorization, mechanical key.
- Over 400 days battery life
Adopting low-power intelligent algorithm.
- Whole-house intelligent linkage
Supports automatic activation of other smart home devices after opening the lock.
- Financial-grade encryption chip to defend data security
Equipped with the Swiss STM32 chip for robust, tamper-proof security.
- EMP Protect Technology
Shield electromagnetic interference to prevent abnormal door lock openings.

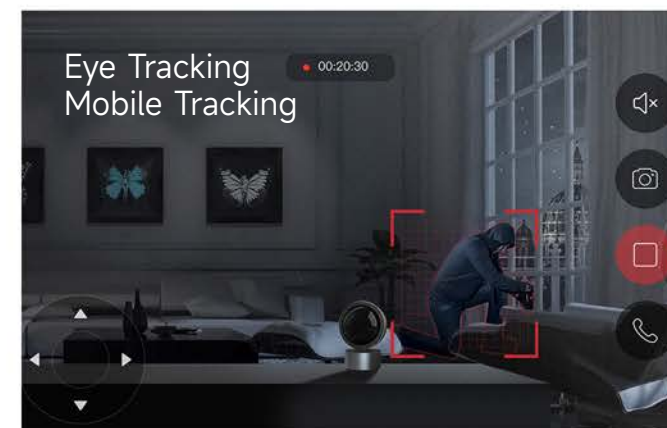
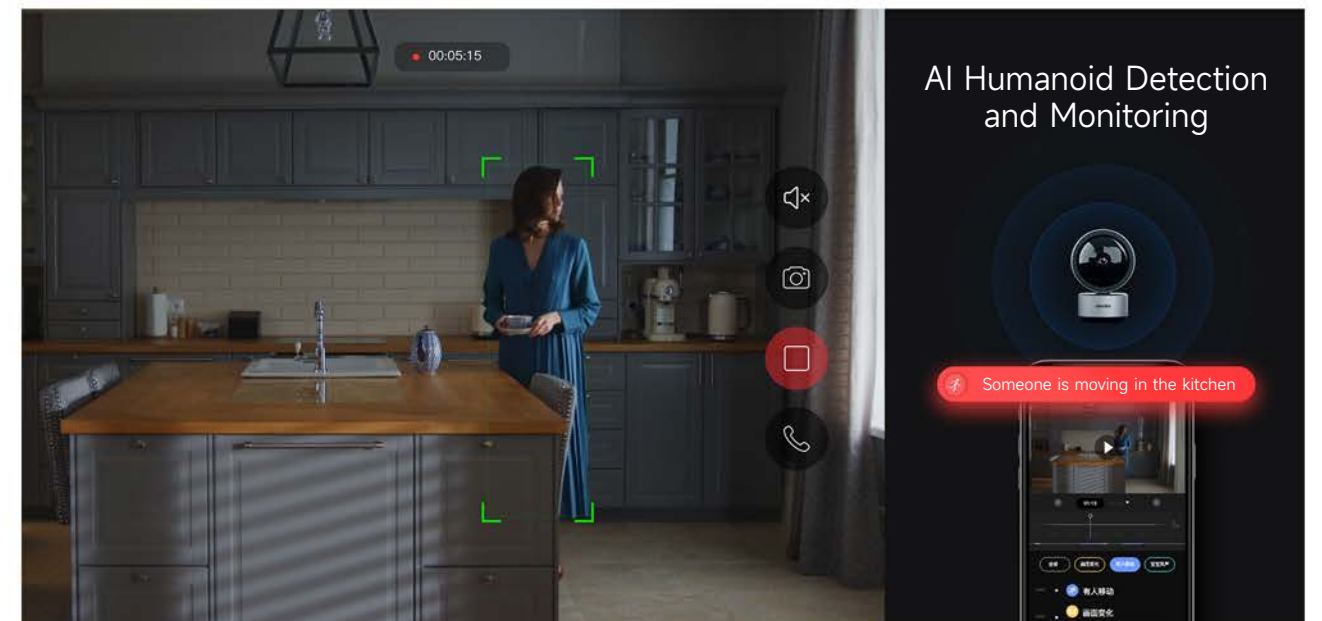
Products	Smart Door Lock V5	Smart Door Lock C1
Panel Dimensions	403 × 70 × 56mm	352 × 67 × 70mm
Unlocking Method	Facial recognition, fingerprint, password, card, mobile NFC, remote authorization, video authorization, MixPad unlocking, mechanical key.	Fingerprint, password, proximity card, key.
Power Supply	Lithium battery: DC 7.4V Drv cell batterv: DC 9V	1.5V (AA alkaline batteries)x4
Battery Type	5000mAh (7.4V)	4 AA batteries, 2 cells/group
Operating Current	< 500mA	< 100mA
Standby Current	< 180μA	< 50μA
Emergency Power Supply Interface	Type C	Mirco USB
Emergency Power Supply	DC 5V	DC 5V
Fingerprint False Acceptance Rate	< 0.0001%	< 0.0001%
User Capacity	1 administrator, 49 regular users, 4 temporary users.	25 users (each user supports 4 fingerprints and 2 sets of passwords and 2 sets of cards)
Material	Zinc alloy + IML (In-Mold Labeling)	aluminum alloy + ABS + tempered glass
Operating Environment	Temperature -10°C~ 55°C, humidity 10~ 90%RH	Temperature -20°C~ 50°C, humidity 0~ 90%RH



Smart 2K Camera S1

2K Giant Eyes , Redefining Vision

- Wide field of view with 2K HD giant eye vision
Up to 3 million pixels, 360° horizontal perspective, 210° vertical viewing angle.
- AI human detection monitoring
Reminders will only be sent when a person appears on the screen.
- Motion tracking and shooting
Capture joyful moments, also track and send alerts when intruders enter.
- Exceptional light sensitivity with infrared night vision
10M night vision distance, CMOS super photosensitive element and F2.0 large aperture.
- Intelligent cry detection ensures anxiety-free childcare monitoring
Know your baby's sleeping status at any time.
- One-touch physical shielding
Prevents privacy breaches at the source.





Secure Everywhere, Anytime

Smart Camera C1

- 1080P HD Imaging
Up to 2 million pixels.
- Panoramic patrol secures every angle
355° horizontal perspective, 60° vertical viewing angle.
- HD infrared night vision, clear as day
Equipped with 8 infrared lights and a large aperture lens, night vision extends up to 10m.
- Physical shield for hidden and exposed risks
Activate lens cover or remote privacy mode.

Product	2K Smart Camera S1	Smart Camera C1
Model	SC41PT	SC40PT
Panel Dimensions	59 × 70 × 102mm	76 × 72 × 118mm
Material	Aluminum Alloy Metal Body	White ABS Body
Pixels	300W	200W
Viewing Angle Range	Horizontal: 355° , Vertical: 110°	Horizontal: 355° , Vertical: 60°
Sensor	1/2.7" CMOS	1/3" CMOS
Infrared Illumination Distance	10m	10m
Sound Detection	Abnormal Sound Detection + Cry Detection	Abnormal Sound Detection
Motion Detection	Supported	Supported
Motion Tracking	Supported	Not Supported
Power Supply	DC5V / 1A	DC5V / 1A
Storage Method	Micro SD Card (max 128G) & Cloud Storage	Micro SD Card (max 128G) & Cloud Storage
Installation Method	Desktop Placement / Normal installation / Inverted installation	Desktop Placement / Normal installation / Inverted installation
Operating Environment	Temperature -10°C~ 50°C, humidity 10% ~ 90%RH	Temperature -10°C~ 50°C, humidity 10~ 90%RH
Communication Method	WiFi 2.4GHz/5GHz	WiFi 2.4GHz



Real-time monitoring of temperature and humidity

Smart Temperature and Humidity Sensor

- Real-time monitoring of temperature and humidity.
- Full house smart home appliance linkage.
- High precision sensor.



Real-time detection of smoke concentration to prevent the spread of danger

Smart Smoke Sensor

- Highly sensitive and stable photoelectric sensor.
- Low-power Zigbee wireless technology is more stable.
- 85dB super decibel alarm sound.



Sensitive detection of gas concentration to prevent hidden dangers

Smart Combustible Gas Sensor

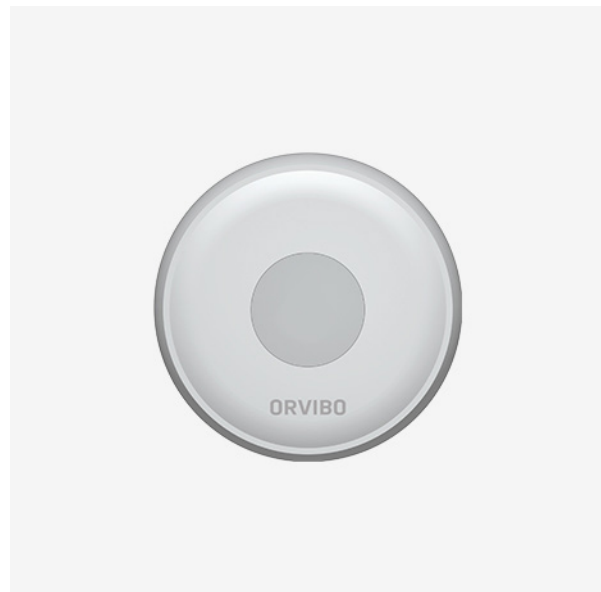
- Imported high stability semiconductor sensor.
- Highly sensitive detection of combustible gas concentration.
- “Active” telephone alarm in case of distress.



One Universal Remote Controller for Whole House

Magic dot Smart Infrared Remote Control

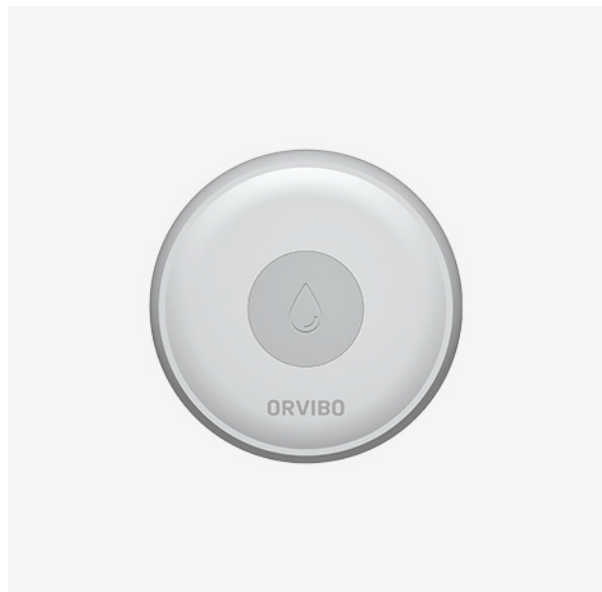
- One-key control of the whole house infrared home appliances with the mobile app.
- Linkage of air conditioners, TVs, set-top boxes, fans, stereos, etc.
- 360° infrared signal coverage without dead angle.
- Zigbee signal control home appliances.



One-click emergency call in distress

Smart Emergency Button

- One-key phone alarm.
- Push alarm reminder.
- Ultra-low power consumption, longer battery life.



Real-time sensing of water anomalies and immediate alerts

Smart Water Leak Sensor

- Be aware of water leakage, overflow and water level. changes at the first time.
- Local light alarm, remote push alarm.

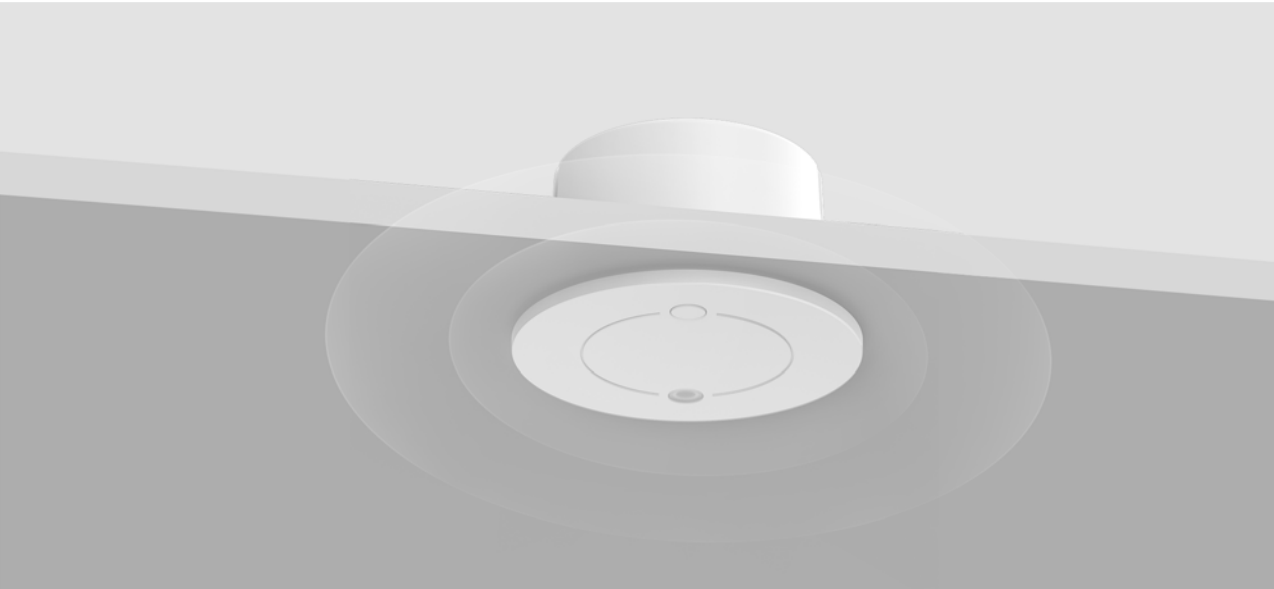


Always sense door and window switch status

Door and Window Sensor

- APP real-time view of door and window switch status.
- Interlocked window pusher, automatically closes the window when it rains.
- No installation required, Ready-to-use.





The same level of unmanned driving provides super perception of human body status

Presence Existor Sensor

- 24GHz millimeter wave radar.
- 12 kinds of human body state accurate detection.
- 12m large detection diameter.
- Intelligent lighting control.



Smart Device Interconnection Essential For Home Security

Smart Motion Sensor

- Family scene linkage, lights will be on when people arrive.
- Leaving mode, prompt reminder of abnormal break-in.
- Tool-free installation, three steps to get.



Products Smart Temperature and Humidity Sensol	
Model ST30	Dimensions Φ61mm × 23mm
Operating Voltage 3V (AA battery)	Operating Current ≤30mA
Standby Current ≤30μA	Networking Method Zigbee mesh networking
Wireless Network Range ≤80M	Accuracy Error Temperature ±0.3°C, humidity +3%
Installation Method Wall-mounted or desktop placement	Operating Environment Temperature -10°C~+55°C, humidity <95% RH

Products Presence Existor Sensor	
Model S360	Dimensions Φ80 × Φ65 × 45mm
Cutout Size Φ66 - 68mm	Protocol ZigBee
Rated Power 3W	Input Voltage AC100-240V 50/60Hz
Detection Range Φ12mm	Detection Angle 90°
Detection Method Millimeter-wave Doppler radar	Light Sensing Range Adjustable
Communication Distance 80M	Installation Method Embedded
Operating Environment Temperature -10°C~+55°C, humidity 5%-95% RH	

Products Door and Window Sensor	
Model SM20	Dimensions 61×30×7mm
Protocol ZigBee	Operating Voltage 3V (CR2032 battery)
Wireless Standard IEEE 802.15.4	Wireless Channels 2.4 GHz Channel 11, 14,15,19,20,24,25
Modulation Method OQPSK	Encryption Method AES-128
Communication Rate 250 Kbps	Transmission Power ≤18 dBm
Encryption Types WEP / TKIP / AES	Operating Environment -20°C~+70°C

Products Smart Smoke Sensor	
Model SF30	Dimensions Φ90mm × 37.5mm
Operating Voltage 3V(CR123A Battery)	Alarm Current <30mA
Standby Current <6μA	Low Voltage Warning 2.6V ±0.2V
Alarm Sound Pressure 80 dB/3M	Networking Method Zigbee mesh networking
Wireless Network Range ≤80M	Installation Method Ceiling mount
Operating Environment Temperature -10°C~+55°C, humidity <95%RH	

Products Smart Water Leak Sensor	
Model SW30	Dimensions Φ44.8mm × 14mm
Operating Voltage 3V (CR2032 battery)	Standby Current < 10μA
Alarm Current < 30mA	Networking Method Zigbee mesh networking
Installation Method Direct Placement	Detection Method Water sensor probe
Alarm Method Local light alarm, remote push notifications	Operating Environment Temperature -10°C~+55°C
Wireless Network Range ≤80M	

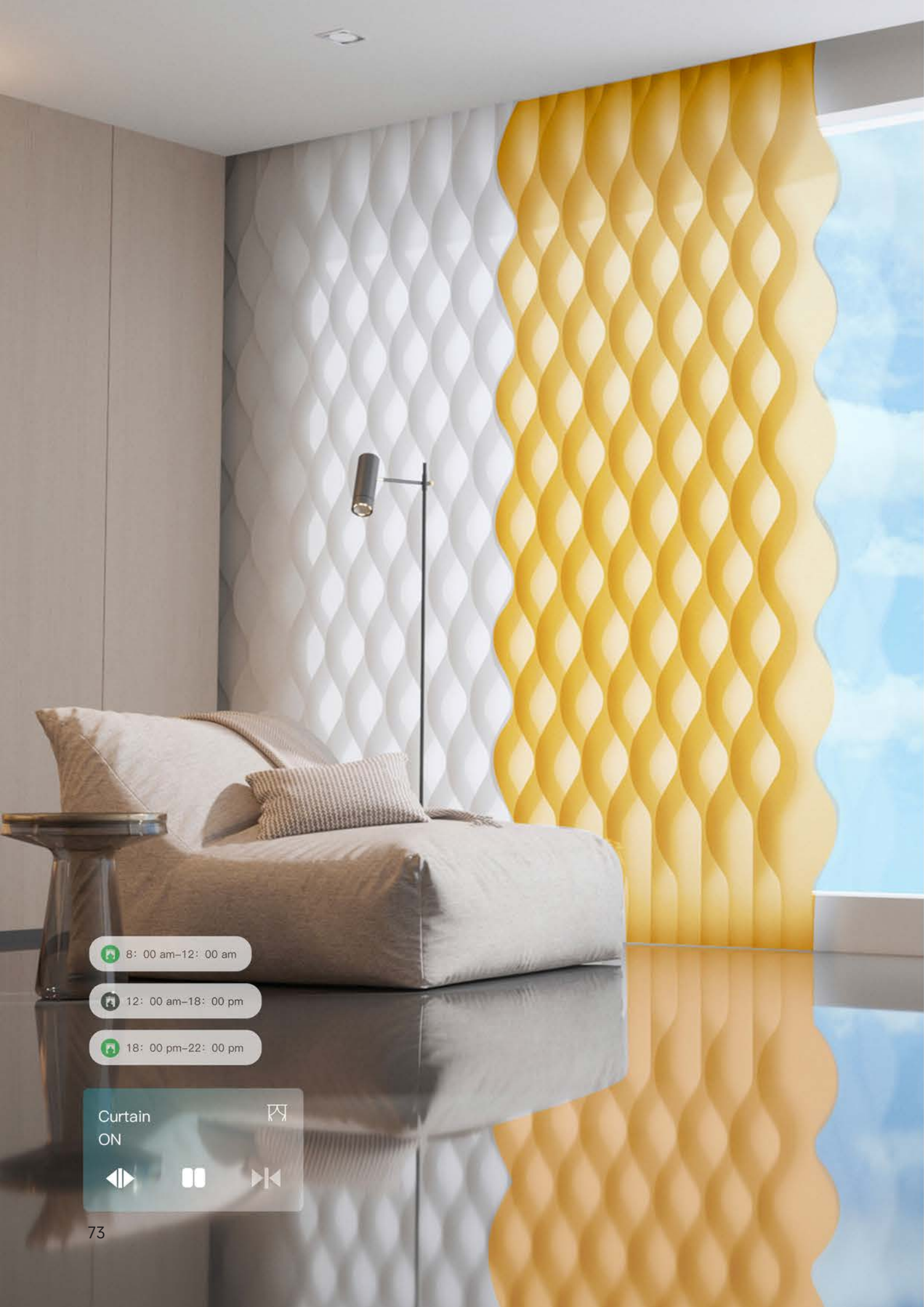
Products Smart Emergency Button	
Model SE30	Dimensions Φ50mm × 16mm
Operating Voltage 3V (AA battery)	Standby Current ≤5μA
Operating Current ≤30mA	Networking Method Zigbee mesh networking
Wireless Network Range ≤80M	Receiver Sensitivity 96dBm
Installation Method Direct placement or adhesive Mount	Operating Environment Temperature -10°C~+55°C

Products Smart Combustible Gas Sensor	
Model JT-SG30	Dimensions Φ86mm × 30mm
Protocol ZigBee	Operating Voltage Input AC220V, output DC12V
Standby Current ≤150mA	Operating Voltage Input AC220V, output DC12V
Standby Current ≤30μA	Alarm Concentration 8% LEL methane (natural gas)
Alarm Concentration Error ±3% LEL	Alarm Method Audible and visual alarm, wireless network alarm
Gas Detected Methane (natural gas)	Installation Method Wall-mounted / ceiling-mounted
Alarm Sound Pressure ≥70 dB (at 1 meter directly in front)	Operating Environment Temperature -10°C~+55°C, humidity ≤95%RH

Products Magic Dot Smart infrared	
Model CT30W	Materials ABS / TPU
Infrared Frequency 20~60KHz	Power input 5V, 1A
Wireless Standard IEEE 802.11b/g/n (WiFi 2.4GHz)	Power Adapter Micro USB DC5V/1A
Operating Environment -20 ~ 55°C	

Smart Curtains, Smart Curtain Motors

Smart Shading

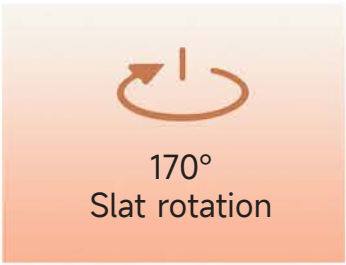
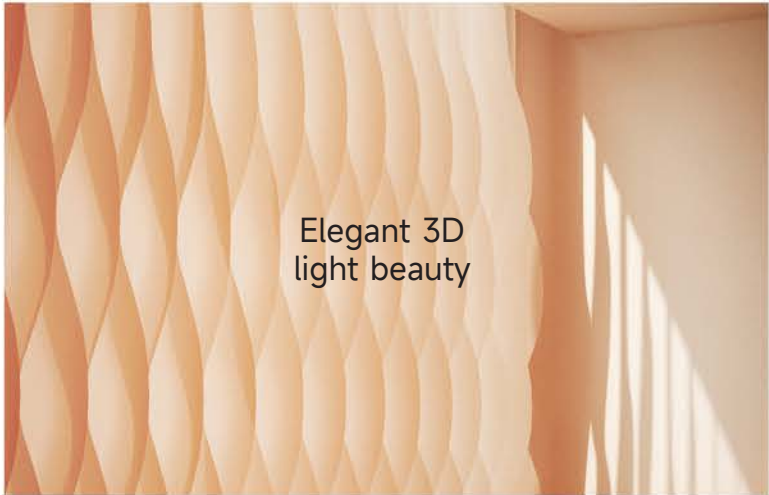
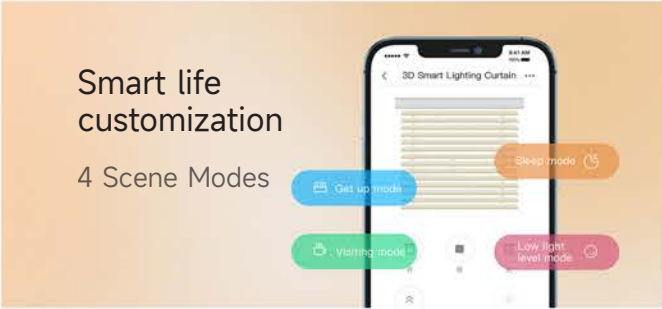
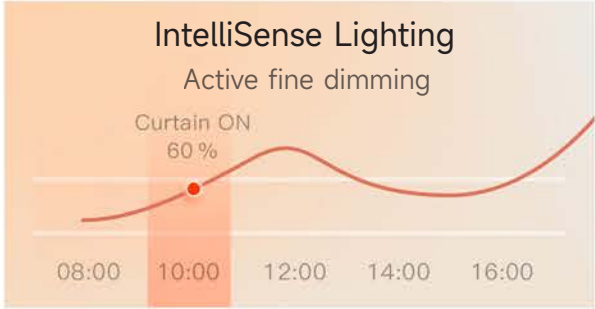


8: 00 am-12: 00 am

12: 00 am-18: 00 pm

18: 00 pm-22: 00 pm

Curtain ON



Light's Play, Beauty Unveiled

3D Smart Lighting Curtain

- **Elegant 3D light and shadow beauty**
The water ripple wave curtain, made from Pattaya high polymer fabric, offers excellent draping.
- **Commands easily penetrate walls**
Equipped with ZigBee 3.0 for millisecond response and a connection range of up to 85 meters.
- **Extreme silence at 30dB**
Spiral bevel gear low-noise reduction technology.
- **Actively fine-tuning brightness**
MixSense S360 detects light levels and lets you set each slat's angle in 5° increments with MixPad.
- **4 scene modes, customizable smart living**
Wake-up mode, sleep mode, guest mode, dim mode.
- **Freely adjusting indoor lighting as desired**
Curtain slats can rotate 170°

Parameter							
Model	W10MZ	Protocol	ZigBee	Motor Size	50 * 45 * 340mm	Input	AC 100-240V 50/60Hz
Power	54W	Torque	1.2 N.m	Weight	717g	Protection Rating	IP20
						Load Capacity	50kg



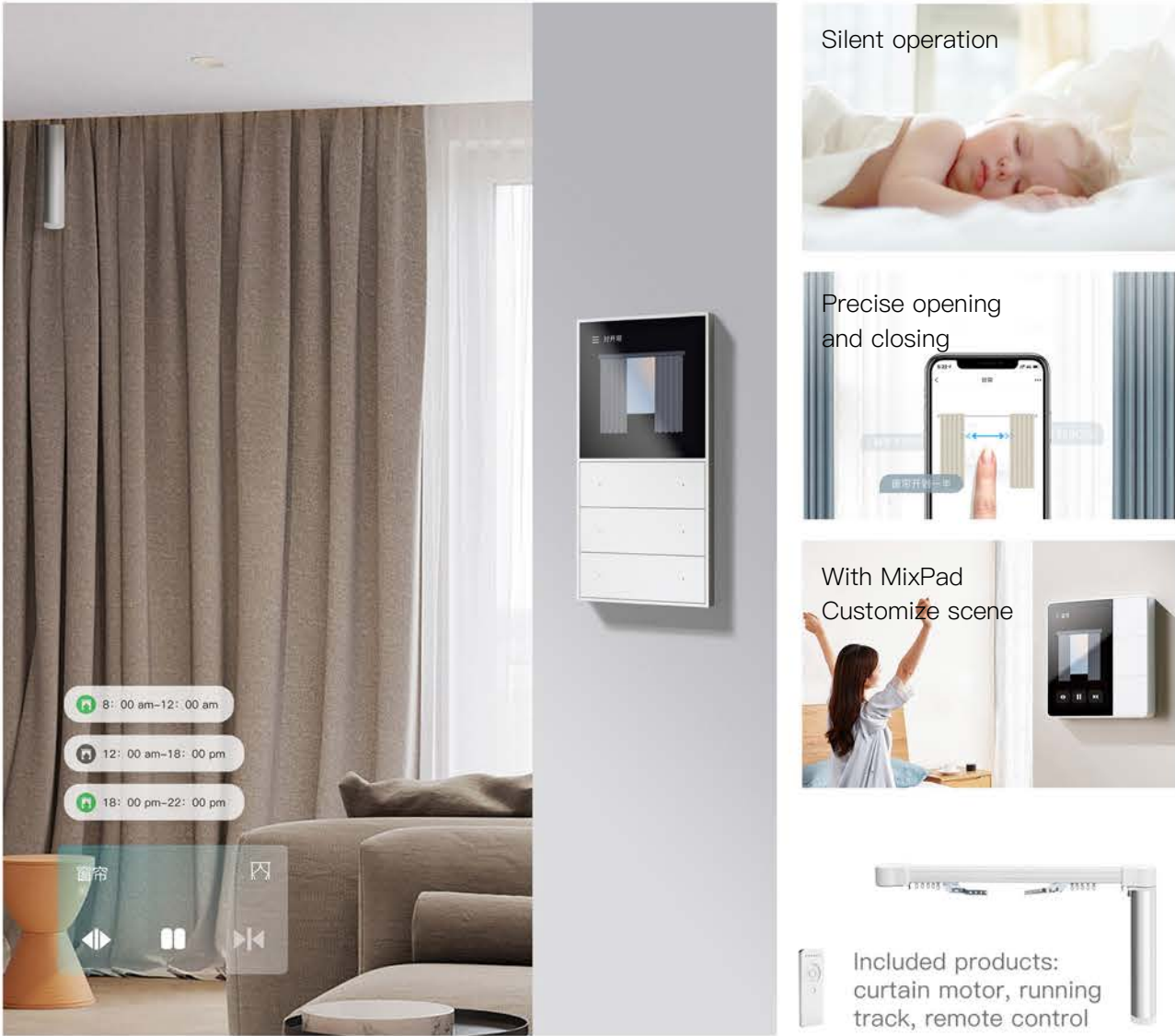
Included products: curtain motor, running track, remote control, lithium battery



Small Size, High Torque

Wiring Free Smart Curtain Motor Kit

- Compact size with high torque, suitable for diverse curtains
Sleek design with a high-precision DC motor for curtains up to 40kg.
- Long-lasting battery for 6 months
Built-in 3000mAh high-capacity battery.
- Wire-free installation
Supports both mains power and lithium battery options.
- Dual ultra-quiet design for peaceful enjoyment
Low power consumption, operates quietly under 35db; rail designed for easy installation and durability.
- Multiple controls
Supports App, remote, touch-sensitive and voice control, compatible with Amazon Alexa and Google Assistant.

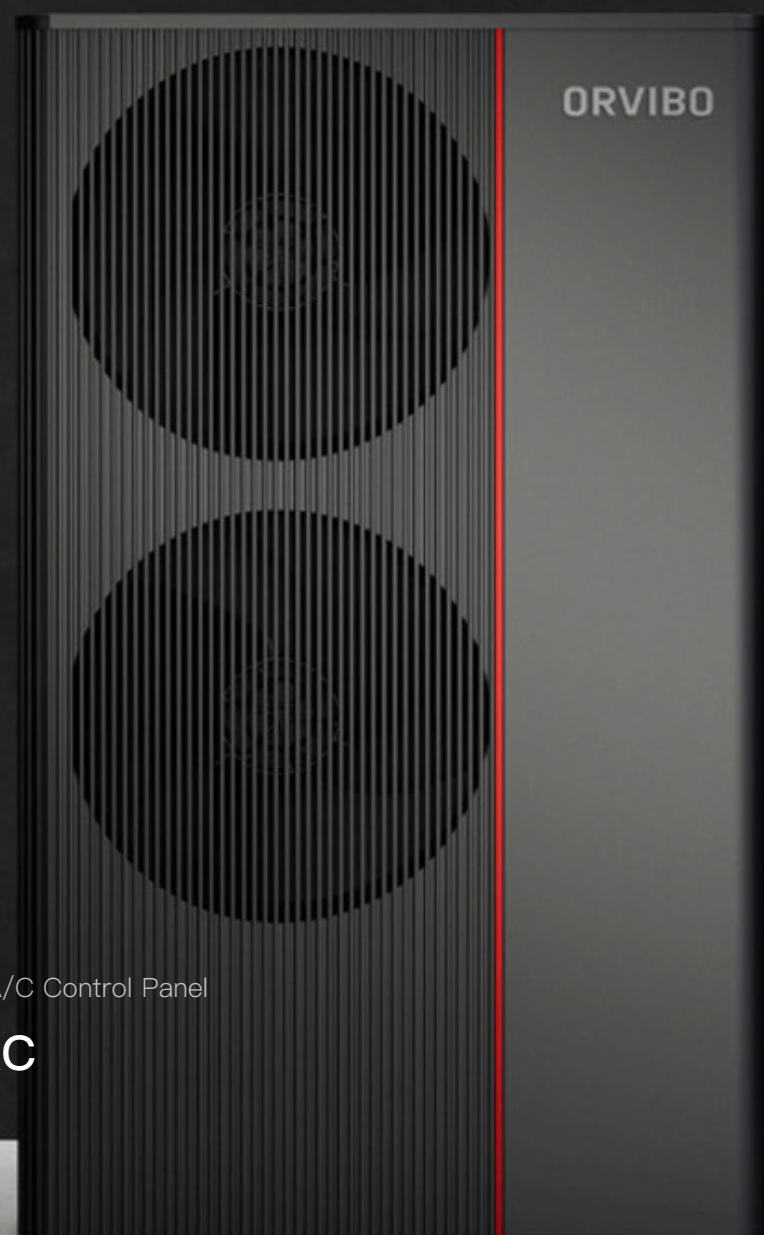


Effortless Elegance with Power and Peace

ZigBee Super Mute Smart Curtain Motor Kit

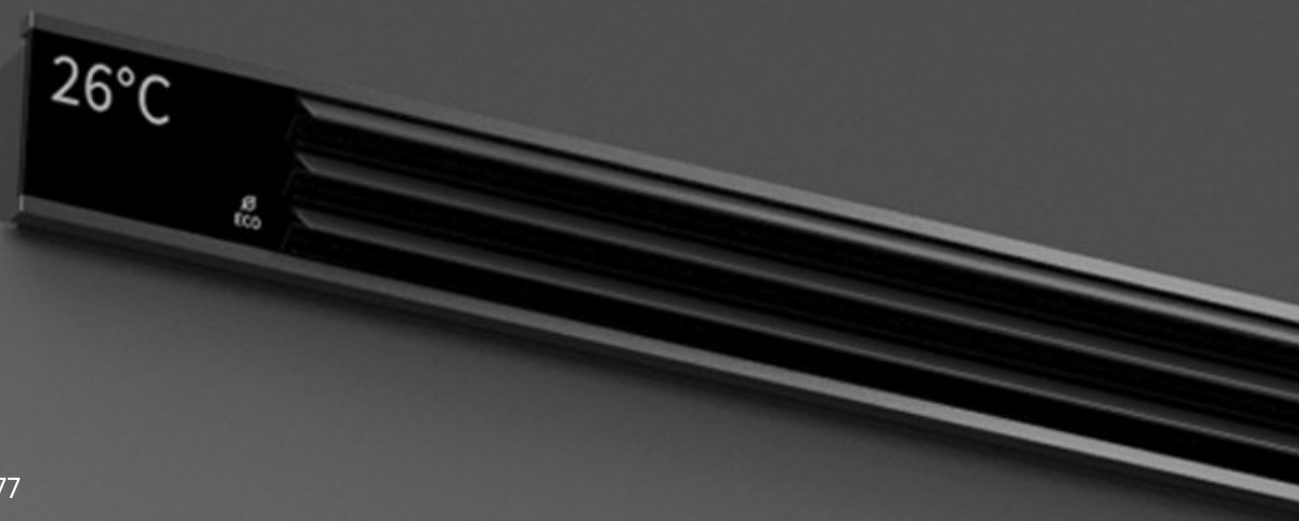
- Multiple controls
Supports App, remote, touch-sensitive and voice control, compatible with Amazon Alexa and Google Assistant.
- Effortlessly pulls heavy curtains
High-torque German motor, 20-year lifetime.
- Premium quality with high-end alloy
The track thickness reaches 2.2mm, supporting up to 50KG in weight.
- 100-meter strong signal coverage
The new Zigbee solution meets the smart linking needs of large spaces, surpassing mainstream configurations tenfold.
- Wire-free installation
Supports both mains power and lithium battery options.
- Ultra-quiet planetary gears for tranquility
Operation noise less than 35dB

Parameter					
Model	W40CZ	Input	AC 100-240V	Dimensions	293 * 78 * 45mm
Power	72W	Rotation speed	80rpm	Torque	1.0 N.m
				Receiving Frequency	433.92MHz, Zigbee 2.4G



MixStation, Central A/C Control Panel

Smart HVAC





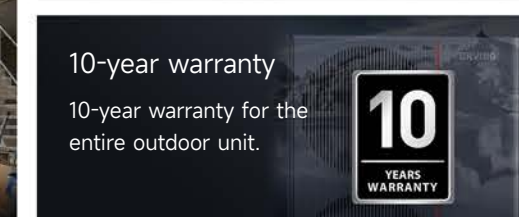
MixPad 7 Air

- " Turn on Aurora mode "
- " Adjust to the temperature for children to sleep "
- " It's too dry, help me adjust the humidity "
- " Help me turn down the air conditioning "
- "The air conditioner sweeps the air up and down."

The New Generation Energy-saving Central Air Conditioner
One Machine for Cooling, Heating, and Hot Water

MixStation - ORVIBO Integrated Air Conditioner

- One machine for cooling, heating, and hot water
Cost-saving: MixStation = central air conditioner + floor heating + hot water.
Energy-saving: heat recovery energy-saving technology, air energy-saving technology, AI energy-saving technology.
Space-saving: small size, can be installed on the flat floor.
- Ultra quiet with seven-fold noise reduction
New noise-reducing fan blades, brushless noise-reducing motor, dual sound-absorbing cotton, shock absorption design, enthalpy compressor, air outlet hood, and scientific pipeline design.
- Produced in the same factory as top European and American brand
5x accuracy helium gas tightness test, online comprehensive "health check", 120° C extreme temperature range testing, unique code for each machine.
- One-Screen intuitive control, easy for seniors and children
Smart zone control, scheduling, and active temperature regulation. Eight preset modes (Home, Away, Wake-up, Sleep, Dehumidify, Constant Temperature, Energy Saving, and Fan), multiple control options (voice, App, touchscreen), one-step activation.
- Concierge-style supervision throughout installation
Free design and professional engineer team installation.
- 10-year warranty
10-year warranty for the entire outdoor unit.





Intelligent voice control

Support 90% of mainstream central air conditioning

美的 Midea

DAIKIN 大金空调

三菱电机 MITSUBISHI ELECTRIC

三菱重工海尔 MITSUBISHI HEAVY-INDUSTRY

GREE 格力

TOSHIBA

HITACHI Inspire the Next 日立

Hisense 海信空调

Mobile phone remote control
Comfort at home

Stable and Smart Control Wherever You Need It

Central A/C Control Panel

- **Stable performance and robust anti-interference capabilities**
Utilizes high-performance SCM for precise calculations.
 - **Wide compatibility**
Compatible with most center A/C systems of the fan coil type.
 - **Easy self-installation**
Easy installation with a mounting plate.
- **Secure and reliable operation for various environments**
Features 128-bit AES communication encryption, suitable for offices, hotels, theaters, hospitals and etc.
 - **Smartphone control and offline operation**
Work with ORVIBO ZigBee smart hub, and support HomeMate App control.

Poducts	Central A/C Control Panel		
Model	T10W1	Wireless Protocol	ZigBee HA
Product size	86×86×15mm	Temperature Range	10°C~30°C
Input	100-240VAC, 50/60HZ	Wireless Frequency	2.4GHZ, IEEE 802.15.4
Current Load	1A (Inductive Load), 2A (Resistive load)	Communication Distance	<200ft

Product	MixStation		
Model	W1	Product Size	1695 × 1015 × 413mm
Input	220V~, 50Hz	Energy Efficiency Grade	Level 1
IPLV	4.43	Refrigerant	R10A
Rated Heating Capacity	20KW	Rated Cooling Capacity	18KW
Heating capacityof Hot Water (electric auxiliary heating)	8KW (3KW)	Maximum Temperature of Hot Water	2.4GHZ, IEEE 802.15.4
Net Mass	70°C	Permissible Mass	200kg
Noise	290kg	Water Side Resistance	57dB (A)
Interface of Air conditioning and Floor Heating Pipeline	G1-1/4"	Interface of Hot Water pipeline	G1/2"